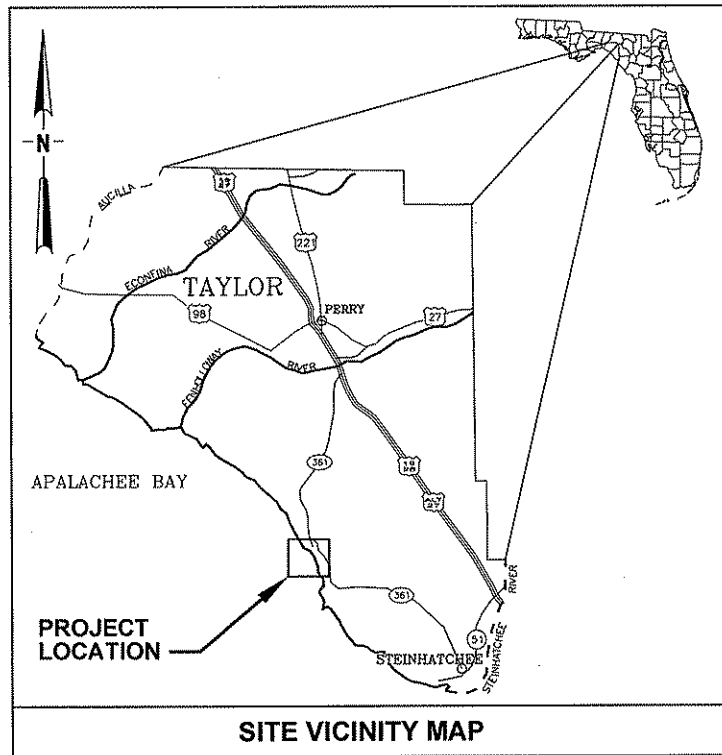


TAYLOR COASTAL CENTRALIZED WASTEWATER SYSTEM - PHASE II

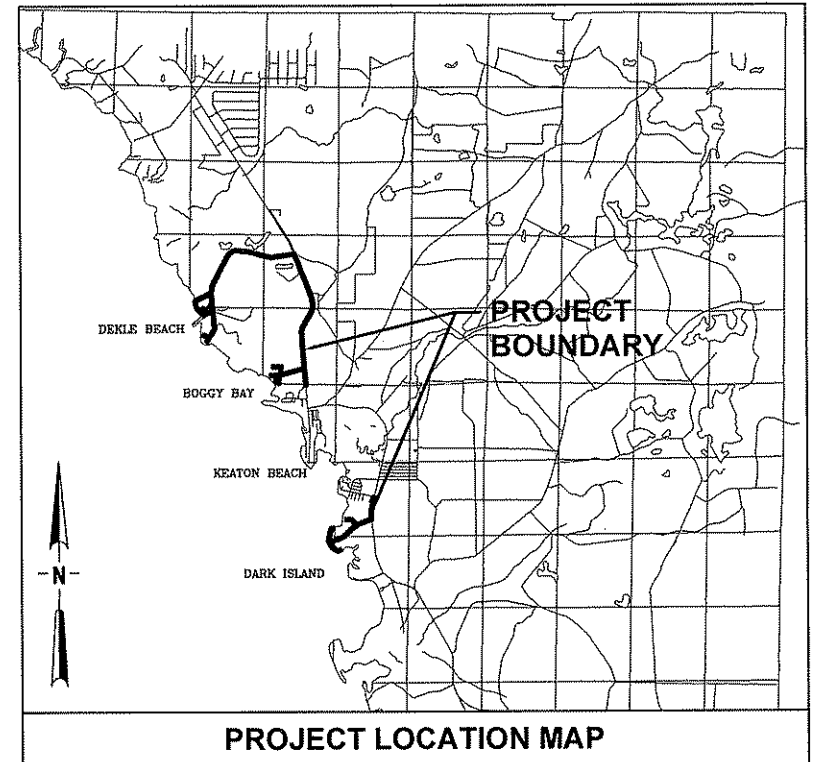
TAYLOR COUNTY, FLORIDA



PREPARED BY:



730 NE WALDO ROAD, GAINESVILLE, FLORIDA 32641 / (352) 377-5821
CERTIFICATE OF AUTHORIZATION #1841



A COOPERATIVE PROJECT BETWEEN:

**TAYLOR COASTAL WATER & SEWER DISTRICT
USDA RURAL DEVELOPMENT
US ENVIRONMENTAL PROTECTION AGENCY
STATE OF FLORIDA**

PROJECT NO: 20450-002-02

AS-BUILT SURVEY

CERTIFICATION:
I hereby certify that in my opinion this is a true representation of the property shown hereon. I further certify that this survey meets the Minimum Technical Standards as set forth by the Florida Board of Professional Land Surveyors and Mappers in Chapter 61G17-6 Florida Administrative Code, Pursuant to Section 472.027 Florida Statutes.

Lawrence D. Rowell
Lawrence D. Rowell P.S.M.
Professional Surveyor and Mapper
F.R.C. #3223 - L.B. #7739

1/20/11
DATE:

Not valid without signature and the original raised seal of a Florida licensed surveyor and mapper

DRAWING INDEX	
DWG NO.	DESCRIPTION
GENERAL	
G-1	COVER SHEET
G-2	DRAWING INDEX AND ABBREVIATIONS
G-3	GENERAL NOTES
G-4	LEGEND
G-5	KEY MAP
CIVIL	
C-1	SANITARY SEWER PLAN
C-2	SANITARY SEWER PLAN
C-3	SANITARY SEWER PLAN
C-4	SANITARY SEWER PLAN
C-5	SANITARY SEWER PLAN
C-6	SANITARY SEWER PLAN
C-7	SANITARY SEWER PLAN
C-8	SANITARY SEWER PLAN
C-9	SANITARY SEWER PLAN
C-10	SANITARY SEWER PLAN
C-11	SANITARY SEWER PLAN
C-12	SANITARY SEWER PLAN
C-13	SANITARY SEWER PLAN
C-14	SANITARY SEWER PLAN
C-15	SANITARY SEWER PLAN
C-16	SANITARY SEWER PLAN
C-17	CONNECTION PICTURES
C-18	CONNECTION PICTURES
C-19	CONNECTION PICTURES
C-20	CONNECTION PICTURES
C-21	CONNECTION PICTURES
C-22	CONNECTION PICTURES
C-23	CONNECTION PICTURES
MECHANICAL	
M-1	TREATMENT PLANT EXISTING AND DEMOLITION PLAN
M-2	TREATMENT PLANT IMPROVEMENTS PLAN
M-3	MECHANICAL DETAILS
ELECTRICAL	
E-1	ELECTRICAL DETAILS
DETAIL	
D-1	STANDARD DETAILS
D-2	STANDARD DETAILS
D-3	STANDARD DETAILS
D-4	STANDARD DETAILS
D-5	STANDARD DETAILS
D-6	STANDARD DETAILS
D-7	STANDARD DETAILS
D-8	STANDARD DETAILS
D-9	STANDARD DETAILS

GENERAL

AASHTO	AMERICAN ASSOCIATION OF STATE HIGHWAY AND TRANSPORTATION OFFICIALS	G	GROUND	RSC	RIGID STEEL CONDUIT
ADS	ADVANCED DRAINAGE SYSTEM PIPE	GALV	GALVANIZED	RT	RIGHT
AFF	ABOVE FINISHED FLOOR	GFI	GROUND FAULT INTERRUPTER	R/W	RIGHT OF WAY
AL	ALUMINUM	GND	GROUND	RW/RAW	RAW WATER
ARV	AIR RELEASE VALVE	GR	GRADE	S	SLOPE
ASPH	ASPHALT	GS	GALVANIZED STEEL	SAN	SANITARY SEWER
ASTM	AMERICAN SOCIETY FOR TESTING AND MATERIALS	GV	GATE VALVE	SCH	SCHEDULE
ATS	AUTOMATIC TRANSFER SWITCH	HDD	HORIZONTAL DIRECTIONAL DRILL	SDR	STANDARD DIMENSION RATIO
AV	AIR VALVE	HDPE	HIGH DENSITY POLYETHYLENE	SE	SOUTHEAST
AVV	AIR VACUUM VALVE	HORIZ	HORIZONTAL	SEC	SECONDARY
AZ	ALARM ZONE	HP	HIGH POINT	SF	SQUARE FEET
BC	BATTERY CHARGER	HT	HEIGHT	SHT	SHEET
BF	BLIND FLANGE	HWL	HIGH WATER LEVEL	SIM	SIMILAR
BKR	BREAKER	HZ	HERTZ	SPEC	SPECIFICATIONS, SPECIFIED
BLD	BLIND	ID	INSIDE DIAMETER	SP	SUPER PAVE
BLDG	BUILDING	IE	INVERT ELEVATION	SPT	STANDARD PENETRATION TEST
BFV	BUTTERFLY VALVE	IN	INCHES	SQ	SQUARE
BM	BENCH MARK	INC	INCREASER	SRWMD	SUWANNEE RIVER WATER MANAGEMENT DISTRICT
BO	BLOW-OFF	JT	JOINT	SS	STAINLESS STEEL
BV	BALL VALVE	KV	KILOVOLT	STA	STATION
BWJ	BUTT WELDED JOINT	KVA	KILOWATT VOLTAGE AMPERE	STAT	STATIONARY
C	CONDUIT	KW	KILOWATT	STD	STANDARD
C/B	CIRCUIT BREAKER	LB	POUND	STL	STEEL
CARV	COMBINATION AIR RELEASE/VACUUM RELIEF VALVE	LBR	LIMEROCK BEARING RATIO	STOR	STORAGE
CDOT	COUNTY DEPARTMENT OF TRANSPORTATION	LBS	LOAD BREAK SWITCH	SW	SOUTHWEST
CF	CUBIC FOOT, CUBIC FEET	LLT	LIQUID LEVEL TRANSMITTER	SWJ	SWITCH
CIR	CIRCUIT	LOC	LIMITS OF CONSTRUCTION	SWJ	SOLVENT WELD JOINT
CISP	CAST IRON SOIL PIPE	LP	LOW PRESSURE	SYM	SYMBOL
CL	CENTERLINE	LT	LEFT	SYS	SYSTEM
CLR	CLEAR	MAX	MAXIMUM	TBM	TEMPORARY BENCH MARK
CMP	CORRUGATED METAL PIPE	MCC	MOTOR CONTROL CENTER	TD	TERMINAL DISTRIBUTION
C/O	CLEANOUT	MECH	MECHANICAL	THRD	THREAD(ED)
CONC	CONCRETE	MFR	MANUFACTURER	TS	TAMPER SWITCH
CONN	CONNECT, CONNECTED, CONNECTION	MFR'S	MANUFACTURER'S	TYP	TYPICAL
CONT	CONTINUOUS	MH	MANHOLE	TZ	TROUBLE ZONE
COMP	COMPRESSED	MIN	MINIMUM	UG	UNDERGROUND
CP	CATHODIC PROTECTION	MISC	MISCELLANEOUS	UGE	UNDER GROUND ELECTRIC
CR	CONTROL RELAY	MJ	MECHANICAL JOINT	UH	UNIT HEATER
CS	CONTROL SWITCH	N	NORTHING, NORTH	US	UNITED STATES
CV	CHECK VALVE	N/A	NOT APPLICABLE	USGS	UNITED STATES GEOLOGICAL SURVEY
DBI	DITCH BOTTOM INLET	NAD	NORTH AMERICAN DATUM	USC & GS	UNITED STATES COASTAL AND GEODETIC SURVEY
DEP	FLORIDA DEPARTMENT OF ENVIRONMENTAL PROTECTION	N/AVAIL	NOT AVAILABLE	V	VALVE
DI	DUCTILE IRON	NAVJ	NORTH AMERICAN VERTICAL DATUM	VERT	VERTICAL
DIA	DIAMETER	NE	NORTHEAST	W	WATER
Ø	DIAMETER	NEC	NATIONAL ELECTRICAL CODE	W/	WITH
DIP	DUCTILE IRON PIPE	NGVD	NATIONAL GEODETIC VERTICAL DATUM	WE	WATER ELEVATION
DIV	DIVISION	No	NUMBER	WGT	WEIGHT
DOT	DEPARTMENT OF TRANSPORTATION	NOM	NOMINAL	WJ	WELDED JOINT
DWG	DRAWING	NPT	NATIONAL PIPE THREAD	WM	WATER MAIN
E	EASTING/ EAST	NTS	NOT TO SCALE	WS	WELDED STEEL
EA	EACH	NW	NORTHWEST	WSEL	WATER SURFACE ELEVATION
ECC	ECCENTRIC	#	NUMBER DESIGNATION	WT	WEIGHT
EF	EACH FACE	OC	ON CENTER	WTP	WATER TREATMENT PLANT
EJ	EXPANSION JOINT	OC EW	ON CENTER EACH WAY	WW	WASTEWATER
EL	ELEVATION	OCL	ON CENTERLINE OF ROAD	WWF	WELDED WIRE FABRIC
ELB	ELBOW	OD	OUTSIDE DIAMETER	WWTP	WASTEWATER TREATMENT PLANT
ELEC	ELECTRICAL	OEOP	ON EDGE OF PAVEMENT	XFMR	TRANSFORMER
EMT	ELECTRICAL METALLIC TUBING	OSHA	OCCUPATIONAL SAFETY AND HEALTH ADMINISTRATION	◆	(CONTROL ELEVATION UNLESS OTHERWISE NOTED)
EOL	EDGE OF LIMEROCK	PB	PUSH BUTTON		
EOP	EDGE OF PAVEMENT	PCE	PIG CLEANOUT EXIT		
EW	EACH WAY	PCL	PIG CLEANOUT LAUNCH		
EXIST	EXISTING	PE	PLAIN END		
EXP	EXPANSION	P/L	PROPERTY LINE		
*F	DEGREES FAHRENHEIT	PI	PRESSURE INDICATOR/GAUGE		
FAB	FABRICATED	PLC	PROGRAMMABLE LOGIC CONTROLLER		
FAC	FLORIDA ADMINISTRATIVE CODE	PNL	PANEL		
FCA	FLANGED COUPLING ADAPTER	POJ	PUSH-ON JOINT		
FCL	FROM CENTERLINE OF ROAD	PRI	PRIMARY		
FDOT	FLORIDA DEPARTMENT OF TRANSPORTATION	PS	PRESSURE SWITCH		
FEOL	FROM EDGE OF CURB	PSI	POUNDS PER SQUARE INCH		
FEOP	FROM EDGE OF LIMEROCK	PV	PLUG VALVE		
FEOWL	FROM EDGE OF PAVEMENT	RL	RED LIGHT		
FEOWL	FROM EDGE OF WHITE LINE	RCP	REINFORCED CONCRETE PIPE		
FF	FLAT FACE	RED	REDUCER		
F/G	FINISH GRADE	REF	REFERENCE (INFORMATION OBTAINED FROM DRAWINGS BY OTHERS)		
FIG	FIGURE	REQ	REQUIRED		
FIN	FINISHED	REV	REVISION		
FJ	FLANGED JOINT	RF	RAISED FACE		
FLG	FLANGE	RJ	RESTRAINED JOINT		
FM	WASTEWATER FORCE MAIN	RMJ	RESTRAINED MECHANICAL JOINT		
FP&L	FLORIDA POWER AND LIGHT	RPM	REVOLUTIONS PER MINUTE		
FT	FOOT, FEET	RPOJ	RESTRAINED PUSH-ON JOINT		

"A"	2/21/16	As Built Dade and Bogy Bay	LDR	LDR	DESIGNED	RBEST
"B"	01/10/11	As Built Dade Island	LDR	LDR	DRAWN	GOLEARY
					CHECKED	JHORVATH
LTR.	DATE	REVISIONS	BY	APPRD.		



**TAYLOR COASTAL CENTRALIZED
WASTEWATER SYSTEM - PHASE II
TAYLOR COUNTY, FL**

DRAWING INDEX AND ABBREVIATIONS

CERTIFICATE OF AUTHORIZATION #1841	DATE	PROJECT NO.
APPROVED BY	01/10/11	20450-002-02
JOHN H HORVATH	SCALE	DWG. NO.
P.E. #47093	AS NOTED	G-2

1. ALL ELEVATIONS ARE BASED ON NAVD OF 1988, UNLESS OTHERWISE NOTED. HORIZONTAL CONTROL IS BASED ON NAD83 STATE PLANE COORDINATES (FLORIDA NORTH ZONE--LAMBERT PROJECTION).
2. AT NO TIME SHALL THE COLLECTION SYSTEM PIPING (PRESSURE LINES) SLOPE OF DESCENDING LEG (IN THE FLOW DIRECTION) EXCEED 11.25 DEGREES FROM THE HORIZONTAL.
3. THE CONTRACTOR SHALL EMPLOY A LAND SURVEYOR REGISTERED IN THE STATE OF FLORIDA, TO REFERENCE AND RESTORE PROPERTY CORNERS AND LAND MARKERS WHICH MAY BE DISTURBED BY CONSTRUCTION.
4. THE CONTRACTOR IS ADVISED NOT TO SCALE FROM DRAWINGS BUT TO FIELD VERIFY ALL DIMENSIONS. THE DIMENSIONS OF SPECIFIED AND FURNISHED PRODUCTS AND MATERIALS TAKE PRECEDENCE OVER DIMENSIONS INDICATED ON THE DRAWINGS.
5. LOCATIONS, ELEVATIONS, AND DIMENSIONS OF EXISTING UTILITIES, STRUCTURES, AND OTHER FEATURES ARE SHOWN BASED ON THE BEST INFORMATION AVAILABLE AT THE TIME OF PREPARATION OF THESE DRAWINGS BUT ARE NOT PURPORTED TO BE ABSOLUTELY CORRECT. THERE MAY BE OTHER IMPROVEMENTS, UTILITIES, ETC. WHICH ARE WITHIN THE PROJECT AREA. CONTRACTOR SHALL VERIFY, PRIOR TO CONSTRUCTION, THE LOCATIONS, ELEVATIONS, AND DIMENSIONS OF ALL EXISTING UTILITIES, STRUCTURES, AND OTHER FEATURES (WHETHER OR NOT SHOWN ON THE DRAWINGS) AFFECTING THEIR WORK.
6. IT IS THE RESPONSIBILITY OF THE CONTRACTOR TO BECOME FAMILIAR WITH THE OSHA EXCAVATION SAFETY STANDARDS AND TO ABIDE BY THEM AS COVERED UNDER THE FLORIDA TRENCH SAFETY ACT (LAWS OF FLORIDA 90-96) EFFECTIVE OCTOBER 1, 1990. NO UTILITY TRENCHES SHALL BE LEFT OPEN OVERNIGHT. :
7. SEDIMENT & EROSION CONTROL SHALL BE THE RESPONSIBILITY OF THE CONTRACTOR. AREAS OF OFF-SITE DISCHARGE DURING CONSTRUCTION SHALL BE PROTECTED WITH A SEDIMENT BARRIER PER FOOT INDEX #102 TO PREVENT OFF-SITE DISCHARGE OF SEDIMENTS. TEMPORARY SEED & MULCH SHOULD BE USED TO CONTROL ON-SITE EROSION WHEN IT IS NOT PRACTICAL TO ESTABLISH PERMANENT VEGETATION. PERMANENT VEGETATION SHALL BE PLACED AS EARLY AS POSSIBLE ON ALL SLOPES STEEPER THAN 3-FOOT HORIZ. TO 1-FOOT VERTICAL. SOD SHALL BE PINNED AS REQUIRED. ALL EROSION & SEDIMENTATION CONTROL MEASURES SHALL BE MAINTAINED IN WORKING ORDER THROUGHOUT CONSTRUCTION.
8. ALL EXISTING SEWER, WATER, ELECTRICAL AND OTHER UTILITY SERVICES SHALL BE MAINTAINED DURING THE ENTIRE CONTRACT PERIOD.
9. THE CONTRACTOR SHALL PROVIDE ACCESS TO ALL FACILITIES THROUGHOUT THE CONTRACT PERIOD.
10. THE CONTRACTOR SHALL ACCURATELY LOCATE AND PROTECT ALL UNDERGROUND PIPES, CABLES, UTILITIES, ETC. ALONG THE ROUTE OF CONSTRUCTION. THIS SHALL BE DONE PRIOR TO EXCAVATION TO AVOID DAMAGE TO SUCH ITEMS. DAMAGED ITEMS SHALL BE REPAIRED IMMEDIATELY BY THE CONTRACTOR WITHOUT AN INCREASE IN THE CONTRACT TIME OR PRICE.
11. THE CONTRACTOR IS RESPONSIBLE FOR BRACING, SHORING, OR PROVIDING OTHER MEANS NECESSARY TO PROTECT AND SUPPORT EXISTING STRUCTURES/UTILITIES, EXPOSED OR UNEXPOSED, ROADS, AND SOIL SLOPES/EMBANKMENTS DURING CONSTRUCTION.
12. THE CONTRACTOR SHALL RESTORE TO THE ORIGINAL CONDITION ALL CULVERTS, GUTTERS, INLETS, AND OTHER DRAINAGE STRUCTURES DISTURBED BY CONSTRUCTION OPERATIONS. THE COST OF THIS WORK SHALL BE INCLUDED IN THE CONTRACTOR'S BID.
13. THE CONTRACTOR SHALL RESTORE WORK AREAS TO A CONDITION EQUAL TO OR BETTER THAN THAT WHICH EXISTED PRIOR TO CONSTRUCTION INCLUDING REPLACEMENT OF DAMAGED PLANTS, TREES, SHRUBBERY, SIGNAGE, SIDEWALK, GRASSING, SODDING, STRIPING, PAVEMENT MARKINGS, FENCING, AND OTHER IMPROVEMENTS. THE COST OF THIS WORK SHALL BE INCLUDED IN THE CONTRACTOR'S BID.
14. ALL SIGNAGE, STRIPING, AND PAVEMENT MARKINGS SHALL CONFORM TO "FDOT ROADWAY AND TRAFFIC DESIGN STANDARDS" LATEST EDITION.
15. THE CONTRACTOR SHALL MAKE MINOR ADJUSTMENTS IN THE ROUTE AS NECESSARY TO AVOID DAMAGE TO TREES, SHRUBS, ETC. SUCH ADJUSTMENTS SHALL REQUIRE THE APPROVAL OF THE ENGINEER PRIOR TO CONSTRUCTION.
16. PROPOSED UTILITY ALIGNMENTS ARE SUBJECT TO ADJUSTMENTS IN THE FIELD IN ORDER TO AVOID UTILITY CONFLICTS. SUCH ADJUSTMENTS SHALL REQUIRE THE APPROVAL OF THE ENGINEER PRIOR TO CONSTRUCTION.
17. DEFLECTION OF PIPE AT JOINTS SHALL NOT EXCEED 75% OF THE MANUFACTURER'S RECOMMENDED MAXIMUM VALUE. MINIMUM BENDING RADIUS SHALL BE 25% GREATER THAN THE MANUFACTURER'S RECOMMENDED MINIMUM VALUE.
18. PROPOSED FUSION WELDED HDPE SEWER LINES SHALL BE LAID AT LEAST 6 FEET HORIZONTALLY FROM EXISTING WATER LINES, EXCEPT WHERE OTHERWISE SHOWN ON THE DRAWINGS. SEWER LINES OF ALTERNATIVE CONSTRUCTION SHALL BE LAID A MINIMUM OF 10 FEET HORIZONTALLY FROM EXISTING WATER LINES. DISTANCES SHALL BE MEASURED INSIDE EDGE TO INSIDE EDGE.
19. AT LOCATIONS WHERE A PROPOSED PIPELINE AND AN EXISTING UTILITY CROSS THE PROPOSED PIPELINE SHALL BE INSTALLED BENEATH THE EXISTING UTILITY IN ACCORDANCE WITH THE TYPICAL UTILITY CONFLICT DETAIL SHOWN ON THE DRAWINGS. WITH APPROVAL FROM THE ENGINEER, THE CONTRACTOR MAY INSTALL THE PROPOSED PIPELINE OVER THE EXISTING UTILITY (EXCLUDING WATER PIPES) PROVIDED THE MINIMUM REQUIRED COVER DEPTH AND THE MINIMUM VERTICAL SEPARATION REQUIREMENTS PRESENTED IN THE TYPICAL UTILITY CONFLICT DETAIL ARE MAINTAINED. AT LOCATIONS WHERE THE MINIMUM VERTICAL SEPARATION BETWEEN A PROPOSED SEWER PIPE AND A WATER PIPE CAN NOT BE ACHIEVED, THE PROPOSED SEWER PIPE FOR A DISTANCE OF AT LEAST 10 FEET ON EACH SIDE OF THE CROSSING, SHALL BE FULLY ENCASED IN CONCRETE IN CONFORMANCE WITH THE CONCRETE ENCASEMENT SHOWN ON THE DRAWINGS.
20. WITH APPROVAL FROM THE ENGINEER, PROPOSED HDPE PIPELINES MAY BE INSTALLED BENEATH UTILITIES WITHOUT THE USE OF FITTINGS (I.E., BY DEFLECTING/BENDING THE HDPE PIPELINE).
21. IN THE EVENT THAT A UTILITY CONFLICT CAN NOT BE RESOLVED BY MAKING MINOR ROUTE ADJUSTMENTS OR

- BY UTILIZING THE TYPICAL UTILITY CONFLICT DETAIL, THE CONTRACTOR SHALL SUBMIT A RELOCATION PLAN TO THE ENGINEER FOR APPROVAL PRIOR TO COMMENCING WORK. ALL RELOCATION EFFORTS SHALL BE SUBJECT TO THE APPROVAL OF THE ENGINEER AND ANY AFFECTED UTILITY COMPANIES. NO ADDITIONAL COMPENSATION WILL BE PROVIDED TO THE CONTRACTOR FOR THESE RELOCATION PLANS.
22. FOR GRAVITY SERVICE PIPING LAY PIPE TO UNIFORM GRADE BETWEEN INDICATED ELEVATION POINTS. PRESSURE PIPING SHALL BE LAID TO THE MINIMUM SPECIFIED COVER, EXCEPT AS OTHERWISE INDICATED ON THE DRAWINGS.
23. SIZE OF FITTINGS SHOWN ON PLANS SHALL CORRESPOND TO ADJACENT STRAIGHT RUN OF PIPE. UNLESS OTHERWISE INDICATED, TYPE OF JOINT AND FITTING MATERIAL SHALL BE AS SPECIFIED FOR THE ADJACENT STRAIGHT RUN OF PIPE.
24. PIPE HANGERS AND SUPPORTS ARE NOT SHOWN UNLESS A SPECIAL TYPE OR CONFIGURATION IS REQUIRED. FINAL SUPPORT, LOCATIONS, AND TYPES SHALL BE DETERMINED BY THE CONTRACTOR AND APPROVED BY THE ENGINEER PRIOR TO INSTALLATION. MAXIMUM SPACING SHALL BE AS SPECIFIED.
25. ALL JOINTS SHALL BE WATERTIGHT. STANDARD WALL PIPE DETAIL SHALL BE USED WHEREVER PIPING PASSES FROM A LIQUID HOLDING CONCRETE STRUCTURE.
26. ALL FLEXIBLE CONNECTORS OR FLANGED COUPLING ADAPTERS SHALL BE PROVIDED WITH A TIE ROD RESTRAINT SYSTEM. THRUST PROTECTION SHALL BE ADEQUATE FOR TEST PRESSURES SHOWN ON THE PIPING SCHEDULE IN SPECIFICATION SECTION 15055.
27. SYMBOLS, LEGENDS, AND PIPE USE IDENTIFICATIONS SHOWN SHALL BE FOLLOWED THROUGHOUT THE PLANS, WHEREVER APPLICABLE. ALL OF THE VARIOUS PIPING APPLICATIONS ARE NOT NECESSARILY USED IN THE PROJECT.
28. ALL BURIED AND EXPOSED PIPING SHALL BE PRESSURE TESTED AS SPECIFIED. ALL BURIED PIPING EXCEPT FOR FLANGED, RESTRAINED JOINT, FUSION WELDED AND SCREW PIPING, SHALL BE PROVIDED WITH A TIE ROD OR A MECHANICAL RESTRAINED JOINT SYSTEM AT ALL DIRECTION CHANGES AND AT ALL JOINTS NECESSARY TO PROVIDE A PROPERLY RESTRAINED SYSTEM.
29. NUMBER AND LOCATION OF UNIONS SHOWN ON PLANS IS ONLY APPROXIMATE, PROVIDE ALL UNIONS NECESSARY TO FACILITATE CONVENIENT REMOVAL OF VALVES AND MECHANICAL EQUIPMENT.
30. WHERE A FLANGED COUPLING ADAPTER IS SHOWN, A STANDARD FLANGE SHALL BE USED TO JOIN THE COUPLING ADAPTER.
31. ALL ANCHORS AND FASTENERS SHALL BE 316 STAINLESS STEEL UNLESS OTHERWISE NOTED.
32. CONTRACTOR SHALL PROVIDE MEANS TO DEWATER SOILS FOR ALL CONSTRUCTION WORK INCLUDING WORK TO DRAIN, CLEAN, REHABILITATE, REPAIR, MODIFY, OR CONSTRUCT PROPOSED OR EXISTING STRUCTURES.
33. EXISTING PIPING AND EQUIPMENT IS SHOWN LIGHT-LINED AND PROPOSED PIPING, PROPOSED WORK AND PROPOSED EQUIPMENT IS SHOWN HEAVY-LINED.
34. THE PROPOSED LOW PRESSURE LINE (DISCHARGE FORCE MAIN) FROM THE GRINDER PUMP TO THE LOW PRESSURE COLLECTION LINE IS TYPICALLY A 1.25" HDPE LOW PRESSURE LINE AND THIS LINE IS NOT LABELED WITH ITS SIZE.
35. PRIOR TO BEGINNING THE WORK, THE CONTRACTOR SHALL PROVIDE STORMWATER AND EROSION CONTROL MEASURES TO PREVENT PONDING AND CONTROL EROSION AND RUNOFF. THE CONTRACTOR SHALL MAINTAIN A CLEAR PATH FOR ALL SURFACE WATER DRAINAGE STRUCTURES AND DITCHES DURING ALL PHASES OF CONSTRUCTION. NO PONDING OF WATER SHALL BE ALLOWED. THE CONTRACTOR SHALL USE ALL MEANS NECESSARY TO PREVENT EROSION AND TO MANAGE STORMWATER SUCH THAT IMPACT TO CONSTRUCTION IS MINIMIZED. THE CONTRACTOR SHALL BE RESPONSIBLE FOR ALL WORK, INCLUDING PROVIDING EQUIPMENT, LABOR, MATERIALS, FILL, ETC. NECESSARY TO REMEDIATE AND/OR RESTORE ALL AREAS IMPACTED BY EROSION AND STORMWATER. SILT FENCING SHALL BE PER FOOT REQUIREMENTS.
36. STORMWATER, RIVERS, OR OTHER BODIES OF WATER CONTAMINATED BY CONTACT WITH DEWATERING DISCHARGE, DIRECTIONAL DRILLING FLUIDS OR SOILS CONTAMINATED BY THE CONTRACTOR, SHALL BE CONTAINED, CAPTURED, AND PROPERLY DISPOSED OF AS REGULATED BY FDEP.
37. THE CONTRACTOR SHALL PREVENT DISTURBANCE TO AND UNDERMINING OF EXISTING ADJACENT STRUCTURES, ROADS, SLABS, PIPING, AND OTHER UTILITIES DURING CONSTRUCTION. ANY EXCAVATION WITHIN A 1 TO 1 SLOPE OF THE BOTTOM OF THE EXCAVATION SHALL HAVE SHORING, SHEETING, OR SOME FORM OF BRACING TO PREVENT THE EXISTING SITE STRUCTURES FROM BEING DISTURBED. THE COSTS OF THESE ADDITIONAL SHORING/BRACING METHODS ARE TO BE INCLUDED IN THE BASE BID AND WILL BE INSTALLED AS REQUIRED AT NO ADDITIONAL COST TO THE OWNER.
38. THE CONTRACTOR SHALL REPLACE ALL EXISTING PAVING, STABILIZED EARTH, PIPING, GRASSING, DITCHING, FENCES, SIGNS AND OTHER IMPROVEMENTS WITH THE SAME TYPE OF MATERIAL THAT WAS REMOVED OR DAMAGED DURING CONSTRUCTION, AS A RESULT OF CONSTRUCTION, OR AS DIRECTED BY THE ENGINEER WITHOUT INCREASE IN THE CONTRACT PRICE OR TIME.
39. CONTRACTOR'S LAYDOWN AND STORAGE AREAS TO BE PROPERLY GRASSED AND RESTORED PRIOR TO THE PROJECT COMPLETION.
40. CONTRACTOR TO UNCOVER ALL LINES, TIE-INS AND CONNECTIONS TO DETERMINE PIPE SIZE, PIPE MATERIAL AND EXISTING CONDITIONS PRIOR TO ORDERING ANY MATERIALS.
41. CONTRACTOR TO GRASS OR SOD ALL AREAS DISTURBED BY THEIR CONSTRUCTION ACTIVITIES AS REQUIRED, AT NO ADDITIONAL COST TO THE OWNER, TO PREVENT ANY SOIL EROSION.
42. FINAL GRADING SHALL PROVIDE FOR PROPER DRAINAGE WITH NO PONDING WATER.
43. LOCATIONS OF ALL WASTEWATER LINES, VALVES, CLEANOUTS, AND DIRECTIONAL DRILLS SHALL BE COORDINATED WITH THE ENGINEER AND MARKED IN THE FIELD WITH PAINT A MINIMUM OF FIVE DAYS PRIOR TO THEIR

- CONSTRUCTION. ALL REQUIRED RELOCATIONS OF FACILITIES WHICH WERE NOT COORDINATED WITH THE ENGINEER, SHALL BE PERFORMED AT NO ADDITIONAL EXPENSE TO THE OWNER.
44. ALL DIRECTIONAL DRILL PITS AND APPURTENANCES SHALL BE CONSTRUCTED WITHIN COUNTY DOT OR STATE OF FLORIDA DOT RIGHTS--OF--WAY.
45. AS REQUIRED TO INSTALL THE WORK, THE CONTRACTOR SHALL DEWATER, HAND EXCAVATE, SHORE--UP TRENCHES, STABILIZE UTILITIES INCLUDING UTILITY POLES AND ROADS, AND PROVIDE SHEET PILING AT NO ADDITIONAL COST TO THE OWNER.
46. CONTRACTOR TO REVIEW ALL STANDARD DETAILS AND INCORPORATE THEM INTO THE WORK AT ALL LOCATIONS THAT THEY APPLY, EVEN IF THE STANDARD DETAIL IS NOT REFERENCED.
47. THE CONTRACTOR SHALL COMPLY WITH ALL TERMS, CONDITIONS, AND REQUIREMENTS OF ALL APPLICABLE PERMITS, INCLUDING, BUT NOT LIMITED TO FDEP, FDOT, RAILROAD, COUNTY DOT, AND WATER MANAGEMENT DISTRICT PERMITS FOR THE PROJECT. ANY FINES LEVIED BY THE PERMITTING AGENCIES RESULTING FROM THE CONTRACTOR'S NON-COMPLIANCE WITH THE TERMS, CONDITIONS, AND REQUIREMENTS OF THE PERMIT WILL BE PAID BY THE CONTRACTOR. IF THE CONTRACTOR DOES NOT PAY THE FINE WITHIN 30 DAYS, THE OWNER MAY DEDUCT THE FINE FROM A PAY REQUEST AND MAKE THIS PAYMENT FOR THE CONTRACTOR.
48. WASTEWATER SERVICE CARDS MUST BE PROVIDED FOR ALL SERVICES. VALVE AND CLEANOUT CARDS MUST BE SUPPLIED FOR EVERY VALVE AND CLEANOUT INSTALLED. THE CARDS MUST BE COMPLETE AND SIGNED BY THE CONTRACTOR AND RESIDENT ENGINEER TO BE PAID FOR. THE CARDS WILL BE THE BASIS OF PAYMENT FOR THESE ITEMS.
49. THE BRANCH OPENING OF ANY TEE THAT HAS A PLUG FOR A FUTURE CONNECTION SHALL NOT BE OBSTRUCTED BY EXISTING UTILITY INTERFACE. ROLL TEE UP AT A 45 DEGREE ANGLE TO AVOID ANY INTERFERENCE.
50. THE CONTRACTOR SHALL NOTIFY "SUNSHINE STATE ONE CALL OF FLORIDA" AT LEAST 2 DAYS PRIOR TO ANY DIGGING WORK AND AT LEAST 10 DAYS BEFORE DIGGING IN WATER TO HAVE ALL EXISTING UTILITIES LOCATED. THE PHONE NUMBER IS 1-800-432-4770 AND THE WEBSITE IS WWW.CALLSUNSHINE.COM.
51. CONTRACTOR IS TO MAINTAIN EXISTING GRADES AND RUNOFF PATTERNS TO PREVENT FLOODING OF PUBLIC AND PRIVATE FACILITIES ADJACENT TO PROJECT.
52. CONTRACTOR SHALL PROVIDE AND INSTALL ALL REQUIRED 4-INCH SCHEDULE 40 PVC GRAVITY SEWER SERVICE LINES, BENDS, CLEANOUTS, TIE-INS, AND ETC., AS REQUIRED, TO TIE SEPTIC TANK INFLUENT LINES TO THE GRINDER PUMP STATIONS. MINIMUM SLOPE ON THE GRAVITY SEWER LINES IS 1.0%. CONTRACTOR TO DETERMINE A REASONABLE LAYOUT OF ALL GRAVITY SEWER SERVICE LINES. TYPICALLY NO GRAVITY SEWER SERVICE LINES ARE SHOWN ON THE DESIGN DRAWINGS.

*A	2/21/11	As Built Dike and Boggy Bay	LDR	LDR
*B	1/10/11	As Built Dark Island	LDR	LDR
LTR.	DATE	REVISIONS	BY	APPRD.

DESIGNED	RBEST
DRAWN	GOLEARY
CHECKED	JHORVATH



**TAYLOR COASTAL CENTRALIZED
WASTEWATER SYSTEM - PHASE II
TAYLOR COUNTY, FL**

GENERAL NOTES

CERTIFICATE OF AUTHORIZATION #1841	DATE	PROJECT NO.
APPROVED BY	01/10/11	20450-002-02
JOHN H HORVATH	SCALE	DWG. NO.
P.E. #47093	AS NOTED	G-3

LEGEND

- T — OVERHEAD TELEPHONE LINE
- FOC — UNDERGROUND FIBEROPTIC CABLE
- UT — UNDERGROUND TELEPHONE LINE
- P — OVERHEAD POWER LINE
- TV — OVERHEAD TELEVISION CABLE
- W — UNDERGROUND WATER LINE
- x — x — FENCE LINE
- — — — — CULVERT
- WATER VALVE
- FIRE HYDRANT
- WATER METER
- DRAINAGE MANHOLE
- TELEPHONE MANHOLE
- TELEPHONE PEDESTAL
- TREE (SIZE AND TYPE AS NOTED)
- WOOD UTILITY POLE
- CONCRETE UTILITY POLE
- GUY WIRE ANCHOR
- WOOD LIGHT POLE
- METAL LIGHT POLE
- CONCRETE LIGHT POLE
- SPAN POLE
- CONCRETE TRAFFIC SIGNAL POLE
- ELECTRIC BOX
- TELEVISION CABLE PEDESTAL
- CONCRETE SURFACE
- BRICK SURFACE
- LIMEROCK SURFACE
- ASPHALT SURFACE
- PROPOSED GRATING
- EXISTING GRATING

- EXISTING ELECTRIC METER
- EXISTING SEPTIC TANK
- PROPOSED AIR RELEASE VALVE FOR BURIED PIPE **(15951P)**
- PROPOSED GRINDER PUMP STATION AND DISCHARGE PIPEING (SIMPLEX - 5 FT DEEP) **(15200P)**
- — — — — PROPOSED SEWER MAIN
- — — — — PROPOSED SEWER SERVICE LINE (1.25" DIAMETER UNLESS OTHERWISE NOTED)
- PROPOSED SEWER CLEANOUT (TERMINAL) **(15208P)**
- PROPOSED SEWER CLEANOUT (IN-LINE) **(15209P)**
- PROPOSED SEWER CLEANOUT (OFF-LINE) **(15210P)**
- PROPOSED PIG CLEANOUT LAUNCH (IN-LINE) **(15800)**
- PROPOSED PIG CLEANOUT EXIT (IN-LINE) **(15801)**
- PROPOSED REDUCER
- PROPOSED GATE VALVE **(15004)**
- PROPOSED PLUG
- — — — — PROPOSED ELECTRIC LINE
- ASPHALT PAVEMENT RESTORATION **(02003)**
- LIMEROCK RESTORATION **(02004)**
- CONCRETE RESTORATION **(02005)**
- SERVICE STUBOUT FOR FUTURE CONNECTION **(15203P)**
- — — — — MATCHLINE
- — — — — SILT FENCE
- DIRECTIONAL DRILL (LENGTH OF EACH DRILL TO BE DETERMINED BY CONTRACTOR AND TOTAL PRICE TO BE INCLUDED IN CONTRACTOR'S BID)
- EXISTING HANDRAIL
- PROPOSED HANDRAIL
- PROPOSED REMOVEABLE HANDRAIL
- — — — — PROPERTY / ROW LINE

- ①
- ② ③ ④ ⑫
- ⑤ ⑦
- ⑥ ⑧
- ⑨
- ⑩
- ⑪
- ⑬
- ⑭
- ⑮
- ⑯ ⑰
- ⑱
- ⑲
- SS — SEWER LINE
- SEWER CLEANOUT
- SEWER TEE
- SEWER VALVE
- GRINDER PUMP
- SEWER STUB-OUT
- AIR RELIEF VALVE

- ① LIMEROCK (FILL)
 - ② LIGHT TO VERY LIGHT GRAY-BROWN, BROWN, GRAY TO WHITE FINE SAND (SP)
 - ③ GRAY-BROWN, BROWN, OR GRAY FINE SAND WITH OCCASSIONAL RED-BROWN STAINING (SP)
 - ④ LIGHT GRAY/BROWN FINE SAND WITH DARK BROWN OR GRAY MOTTLING (SP)
 - ⑤ LIGHT GRAY/BROWN FINE SAND WITH DARK BROWN, GRAY TO BLACK SILTY SAND (SP-SM)
 - ⑥ DARK BROWN OR GRAY SILTY SAND WITH OCCASSIONAL ORGANICS (SM)
 - ⑦ DARK BROWN OR GRAY FINE SAND WITH SILT (SP-SM)
 - ⑧ DARK GRAY TO BLACK SILTY SAND (SM)
 - ⑨ BROWN MUCK OR MUCKY PEAT (PT)
 - ⑩ YELLOW/BROWN OR ORANGE/BROWN TO LIGHT YELLOW TO WHITE FINE SAND WITH OCCASSIONAL LIMESTONE (SP)
 - ⑪ DARK BROWN FINE SAND WITH MUCKY PEAT OR PEAT (SP-PT)
 - ⑫ YELLOW/BROWN OR ORANGE/BROWN TO LIGHT YELLOW TO WHITE FINE SAND (SP)
 - ⑬ DARK BROWN SILTY SAND WITH CLAY POCKETS (SM-SC)
 - ⑭ LIGHT YELLOW, YELLOW/BROWN, ORANGE/BROWN, OR GRAY/BROWN SAND WITH CLAY OR CLAY POCKETS (SP-SC)
 - ⑮ YELLOW, ORANGE-BROWN, OR LIGHT GRAY CLAYEY SAND (SC)
 - ⑯ LIGHT GRAY-GREEN OR YELLOW SANDY CLAY (CL)
 - ⑰ ORANGE-BROWN SANDY CLAY (CL)
 - ⑱ LIGHT GRAY-GREEN OR YELLOW CLAY (CL)
 - ⑲ DARK GRAY/GRAY SILTY SAND WITH CLAYEY MUCK OR MUCK (SM-PT)
- (SP) (SP) UNIFIED SOIL CLASSIFICATION GROUP SYMBOL AS DETERMINED BY VISUAL EXAMINATION
- 7.5 DEPTH TO GROUNDWATER LEVEL IN FEET
- SHW SEASONAL HIGH WATER TABLE ESTIMATE BASED ON VISUAL EXAMINATION

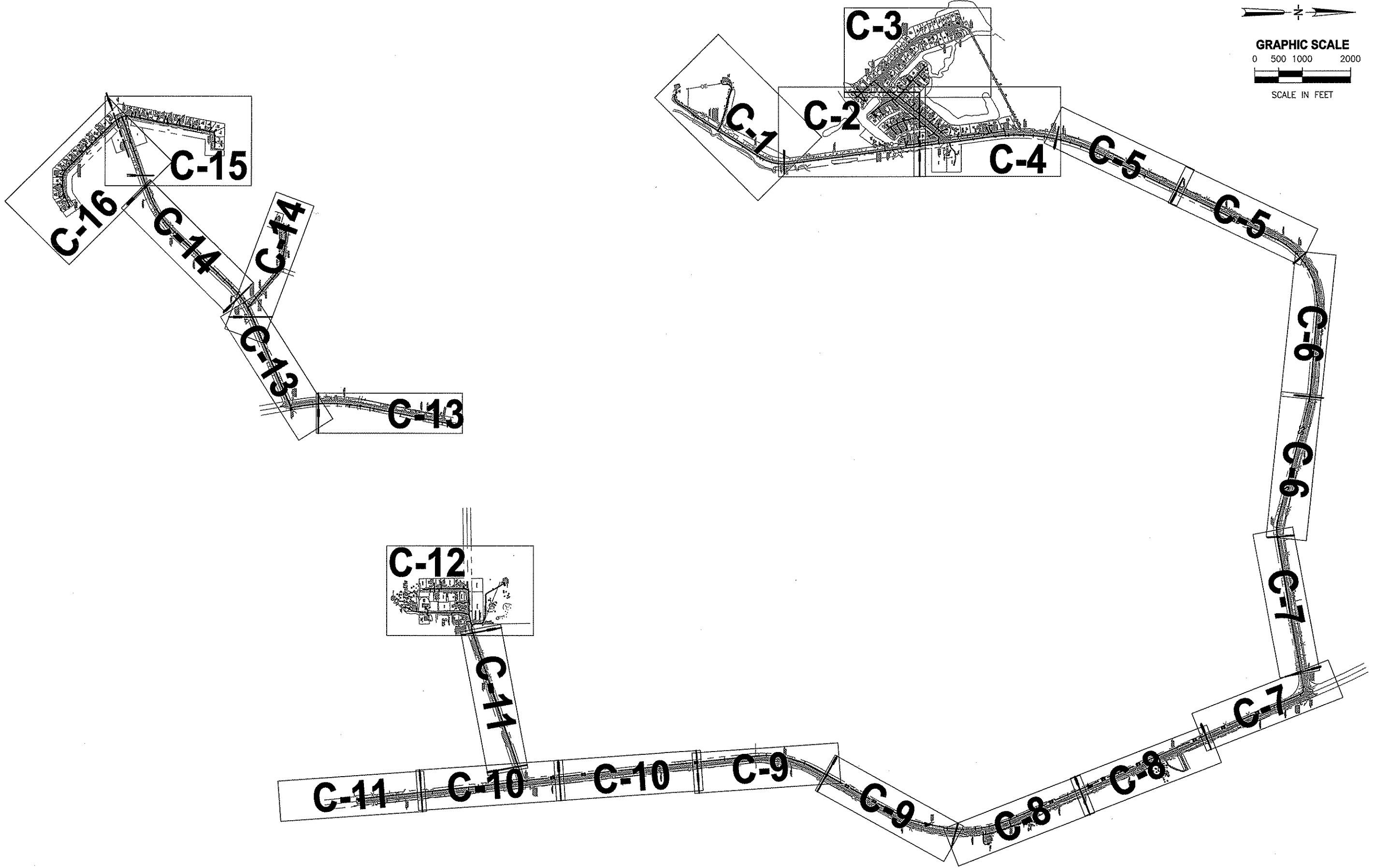
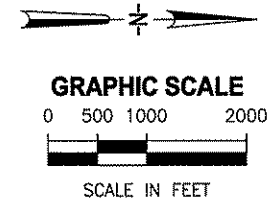
"A"	2/21/10	As Built DeMe and Boggy Bay	LDR	LDR	DESIGNED	RBEST
"B"	01/10/11	As Built Dark Island	LDR	LDR	DRAWN	GOLEARY
LTR.	DATE	REVISIONS	BY	APPRD.	CHECKED	JHORVATH

JONES EDMUNDS
730 NE WALDO ROAD, GAINESVILLE, FLORIDA 32641 / (352) 377-5821

TAYLOR COASTAL CENTRALIZED WASTEWATER SYSTEM - PHASE II
TAYLOR COUNTY, FL

LEGEND

CERTIFICATE OF AUTHORIZATION #1841	DATE	PROJECT NO.
APPROVED BY	01/10/11	20450-002-02
JOHN H. HORVATH	SCALE	DWG. NO.
P.E. #47093	AS NOTED	G-4



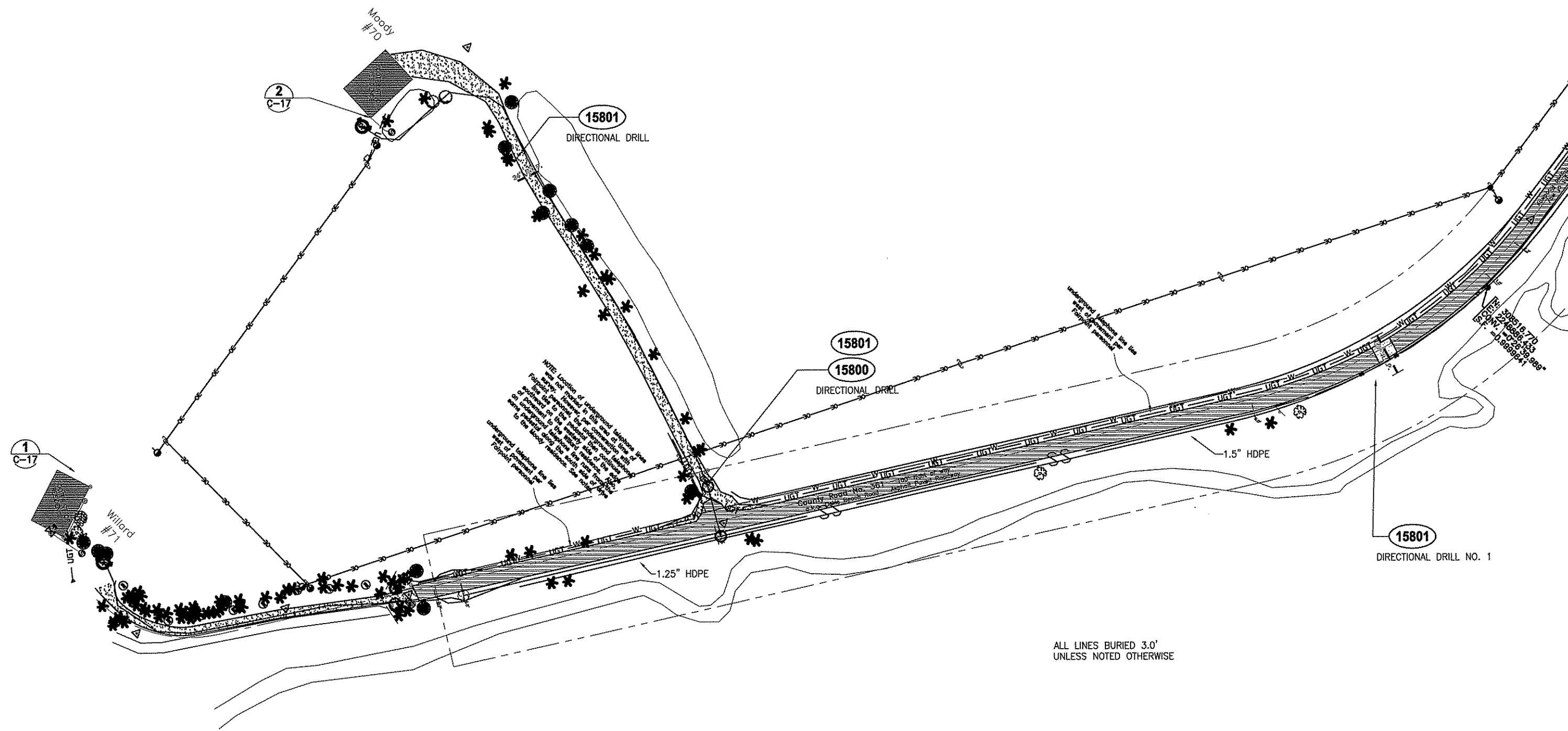
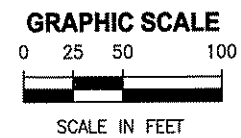
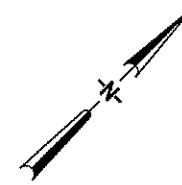
"A"	12/21/10	As Built Decks and Boggy Bay	LDR	LDR	DESIGNED	RBEST
"B"	01/10/11	As Built Dark Island	LDR	LDR	DRAWN	GOLEARY
LTR.	DATE	REVISIONS	BY	APPRD.	CHECKED	JHORVATH



**TAYLOR COASTAL CENTRALIZED
WASTEWATER SYSTEM - PHASE II
TAYLOR COUNTY, FL**

KEY MAP

CERTIFICATE OF AUTHORIZATION #1841	DATE	PROJECT NO.
APPROVED BY	01/10/11	20450-002-02
JOHN H HORVATH	SCALE	DWG. NO.
P.E. #47093	AS NOTED	G-5



NOTE: Location of underground sanitary line was not provided in the original plan. The location of the line was determined by a directional drill. The location of the line is shown on this plan. The location of the line is shown on this plan. The location of the line is shown on this plan.

ALL LINES BURIED 3.0'
 UNLESS NOTED OTHERWISE

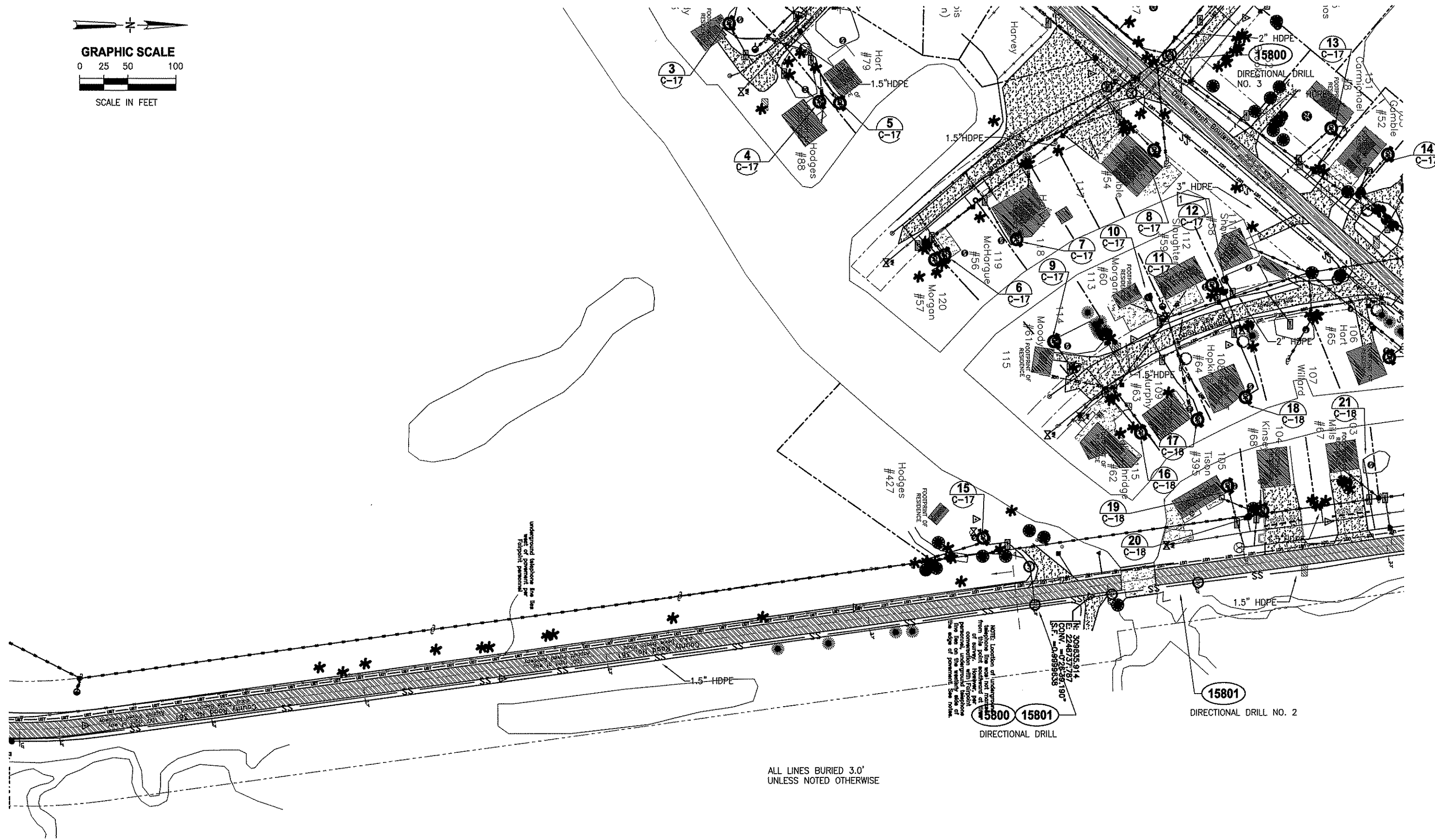
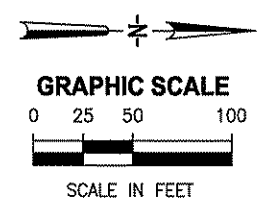
LTR.	DATE	REVISIONS	BY	APPRD.	CHECKED	JHORVATH
"A"	2/21/10	As Built Dele and Boggy Bay	LDR	LDR	DESIGNED	RBEST
"B"	01/10/11	As Built Dark Island	LDR	LDR	DRAWN	GOLEARY



TAYLOR COASTAL CENTRALIZED WASTEWATER SYSTEM - PHASE II
TAYLOR COUNTY, FL

SANITARY SEWER PLAN

CERTIFICATE OF AUTHORIZATION #1841	DATE	PROJECT NO.
APPROVED BY	01/10/11	20450-002-02
JOHN H HORVATH	SCALE	DWG. NO.
P.E. #47093	AS NOTED	C-1



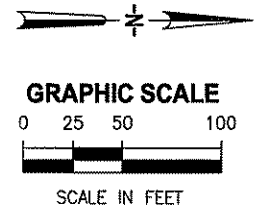
LTR.	DATE	REVISIONS	BY	APPROD.
"A"	12/21/10	As Built Dele and Boggy Bay	LDR	LDR
"B"	01/10/11	As Built Dark Island	LDR	LDR
DESIGNED	RBEST			
DRAWN	GOLEARY			
CHECKED	JHORVATH			

JONES EDMUNDS
 730 NE WALDO ROAD, GAINESVILLE, FLORIDA 32641 / (352) 377-5821

TAYLOR COASTAL CENTRALIZED WASTEWATER SYSTEM - PHASE II
 TAYLOR COUNTY, FL

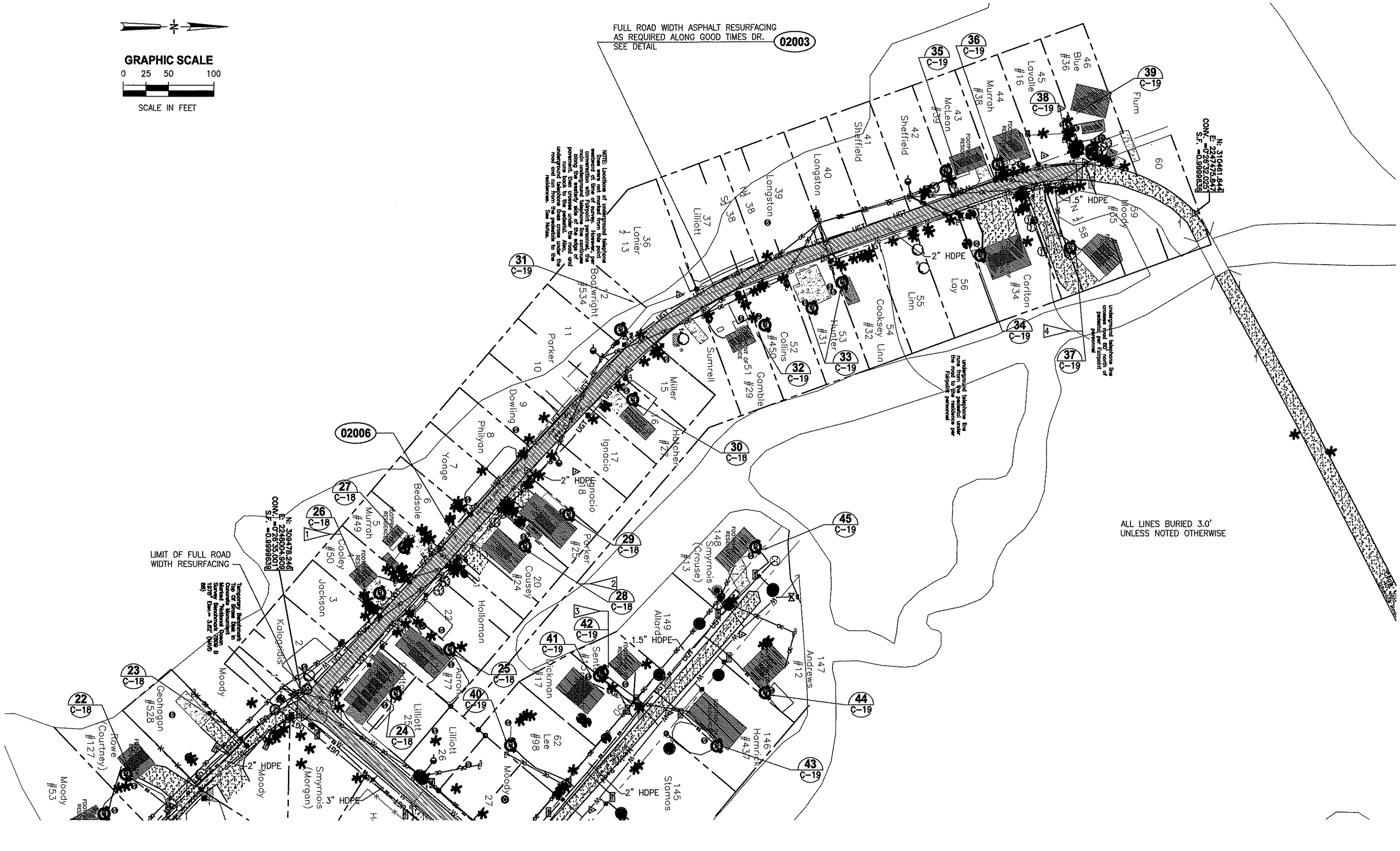
SANITARY SEWER PLAN

CERTIFICATE OF AUTHORIZATION #1841	DATE	PROJECT NO.
APPROVED BY	01/10/11	20450-002-02
JOHN H HORVATH	SCALE	DWG. NO.
P.E. #47093	AS NOTED	C-2



FULL ROAD WIDTH ASPHALT RESURFACING
AS REQUIRED ALONG GOOD TIMES DR.
SEE DETAIL (02003)

NOTE: Locations of underground telephone wires are not shown from this point forward. The utility company, in cooperation with Fairport personnel, the utility underground telephone line continues along the street under the road and crosses under the road and under the road. The utility company is responsible for the utility lines under the road and under the road. See Notes to the utility company.



ALL LINES BURIED 3.0'
UNLESS NOTED OTHERWISE

LIMIT OF FULL ROAD
WIDTH RESURFACING

N. 309478.948
E. 234870.508
COM. # 02006
S.F. # 0.998638

Temporary Sanitary Sewer Line in Right of Way for the 1978 Sanitary Sewer System (Morgan) 1978 (See 322' (Morgan) 89)

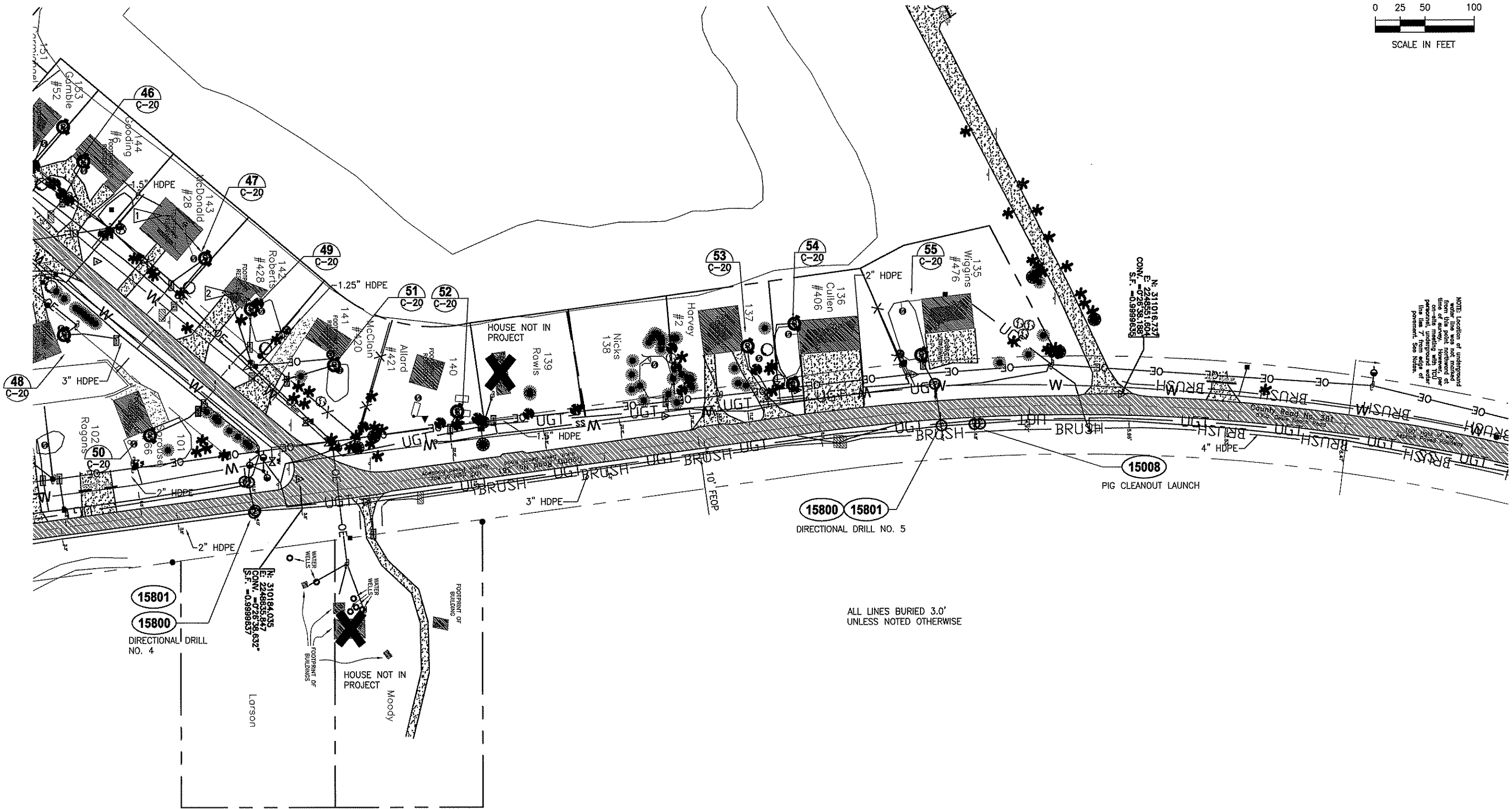
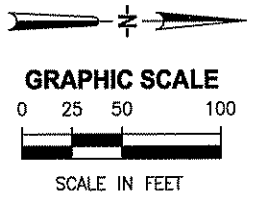
LTR.	DATE	REVISIONS	BY	APPROD.
"A"	12/21/10	As Built Deke and Boggy Bay	LDR	LDR
"B"	01/10/11	As Built Dark Island	LDR	LDR
DESIGNED RBEST			DRAWN GOLEARY	
CHECKED JHORVATH				

JONES EDMUNDS
730 NE WALDO ROAD, GAINESVILLE, FLORIDA 32641 / (352) 377-5821

**TAYLOR COASTAL CENTRALIZED
WASTEWATER SYSTEM - PHASE II
TAYLOR COUNTY, FL**

SANITARY SEWER PLAN

CERTIFICATE OF AUTHORIZATION #1841 APPROVED BY JOHN H. HORVATH P.E. #47093	DATE 01/10/11 SCALE AS NOTED	PROJECT NO. 20450-002-02 DWG. NO. C-3
---	---------------------------------------	--



NOTE: Location of underground utility lines shown on this plan is based on information provided by the owner. However, the contractor shall be responsible for locating all underground utility lines 7' from edge of pavement. See notes.

ALL LINES BURIED 3.0'
UNLESS NOTED OTHERWISE

LTR.	DATE	REVISIONS	BY	APPRD.
"a"	2/21/10	As BuR Deke and Boggy Bay	LDR	LDR
"b"	01/10/11	As BuR Dark Island	LDR	LDR

DESIGNED	RBEST
DRAWN	GOLEARY
CHECKED	JHORVATH

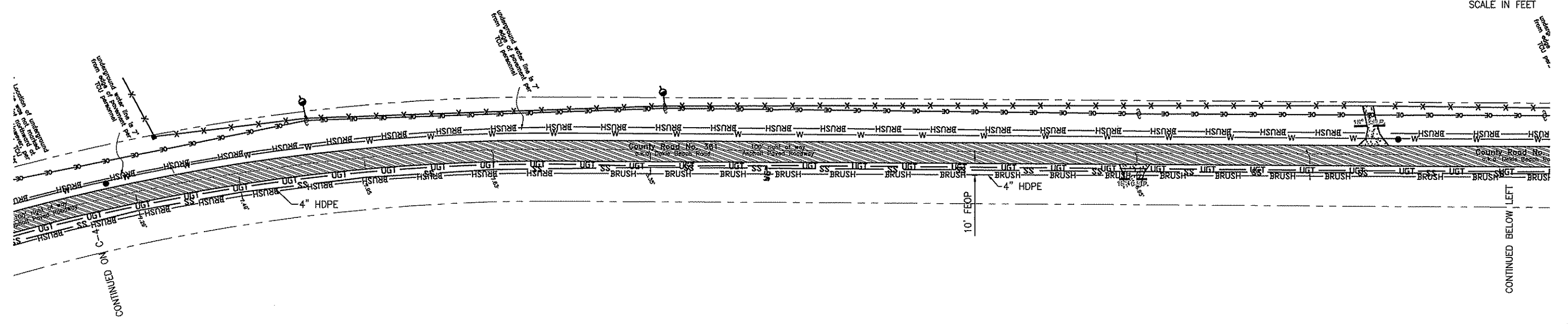
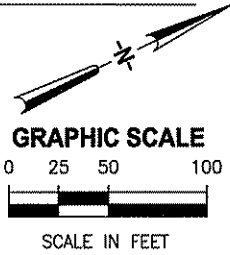
JONES EDMUNDS
730 NE WALDO ROAD, GAINESVILLE, FLORIDA 32641 / (352) 377-5821

TAYLOR COASTAL CENTRALIZED WASTEWATER SYSTEM - PHASE II
TAYLOR COUNTY, FL

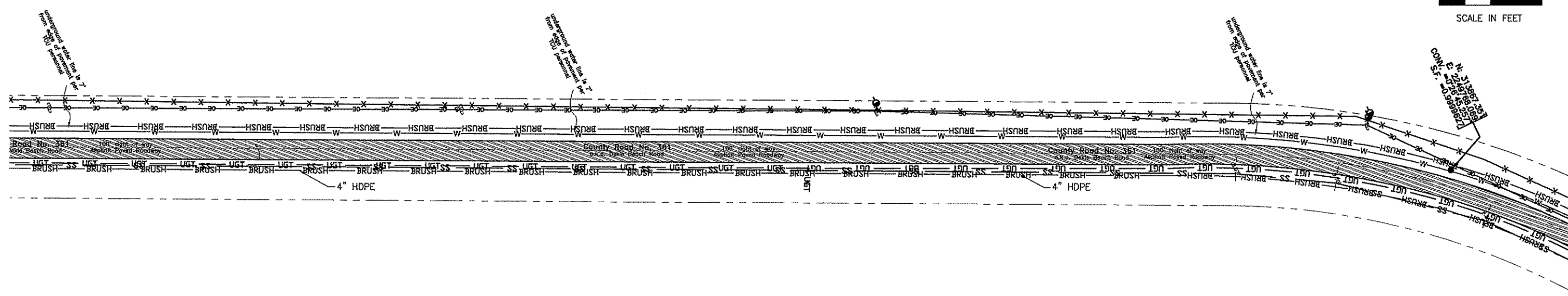
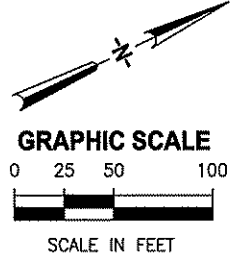
SANITARY SEWER PLAN

CERTIFICATE OF AUTHORIZATION #1841
APPROVED BY
JOHN H. HORVATH
P.E. #47093

DATE	01/10/11	PROJECT NO.	20450-002-02
SCALE	AS NOTED	DWG. NO.	C-4



ALL LINES BURIED 3.0'
UNLESS NOTED OTHERWISE



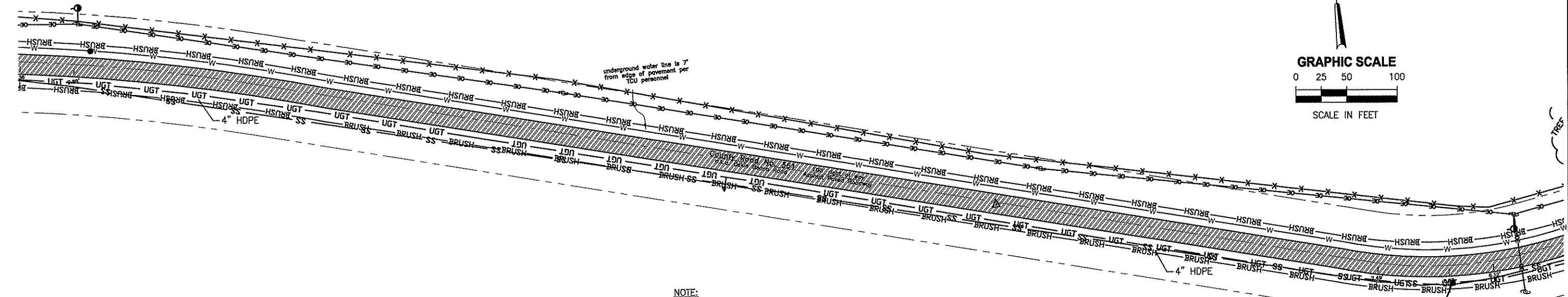
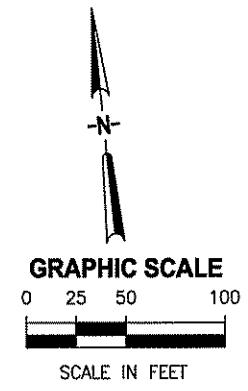
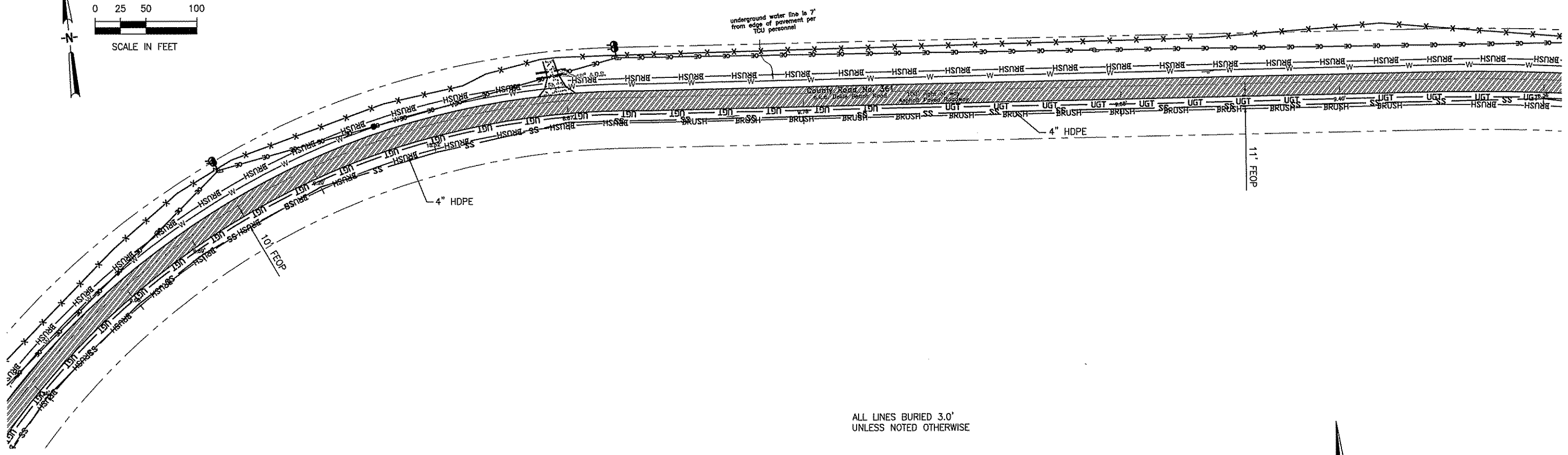
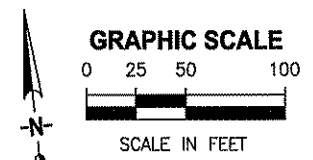
"A"	12/21/10	As Built Deke and Boggy Bay	LDR	LDR	DESIGNED	RBEST
"B"	01/10/11	As Built Dark Island	LDR	LDR	DRAWN	GOLEARY
LTR.	DATE	REVISIONS	BY	APPRD.	CHECKED	JHORVATH



**TAYLOR COASTAL CENTRALIZED
WASTEWATER SYSTEM - PHASE II
TAYLOR COUNTY, FL**

SANITARY SEWER PLAN

CERTIFICATE OF AUTHORIZATION #1841	DATE	PROJECT NO.
APPROVED BY	01/10/11	20450-002-02
JOHN H HORVATH	SCALE	DWG. NO.
P.E. #47093	AS NOTED	C-5



NOTE:
CONTRACTOR TO COORDINATE FORCE MAIN LOCATION WITH ENGINEER'S REPRESENTATIVE ON SITE SO AS NOT TO CONFLICT WITH UNDERGROUND TELEPHONE LINES. FORCE MAIN MUST BE AT LEAST 8 FEET FROM EDGE OF PAVEMENT.

N: 313683.650
E: 2252703.798
CONV. = 0.27020021
S.F. = 0.9989628

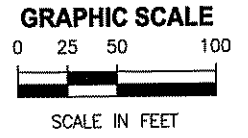
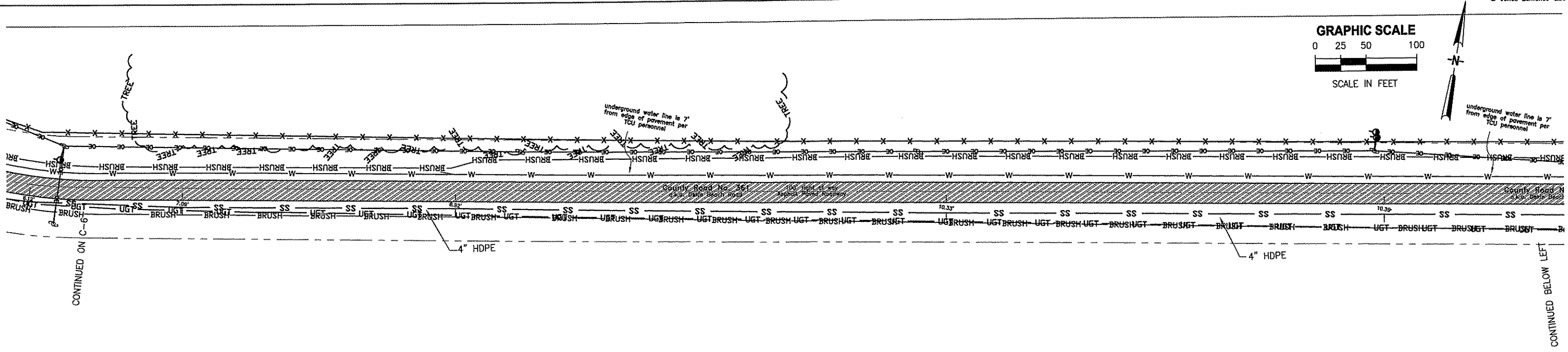
"A"	2/21/14	As Built Dike and Boggy Bay	LDR	LDR	DESIGNED	RBEST
"B"	01/10/14	As Built Dork Island	LDR	LDR	DRAWN	GOLEARY
					CHECKED	JHORVATH
LTR.	DATE	REVISIONS	BY	APPRD.		

JONES EDMUNDS
730 NE WALDO ROAD, GAINESVILLE, FLORIDA 32641 / (352) 377-5821

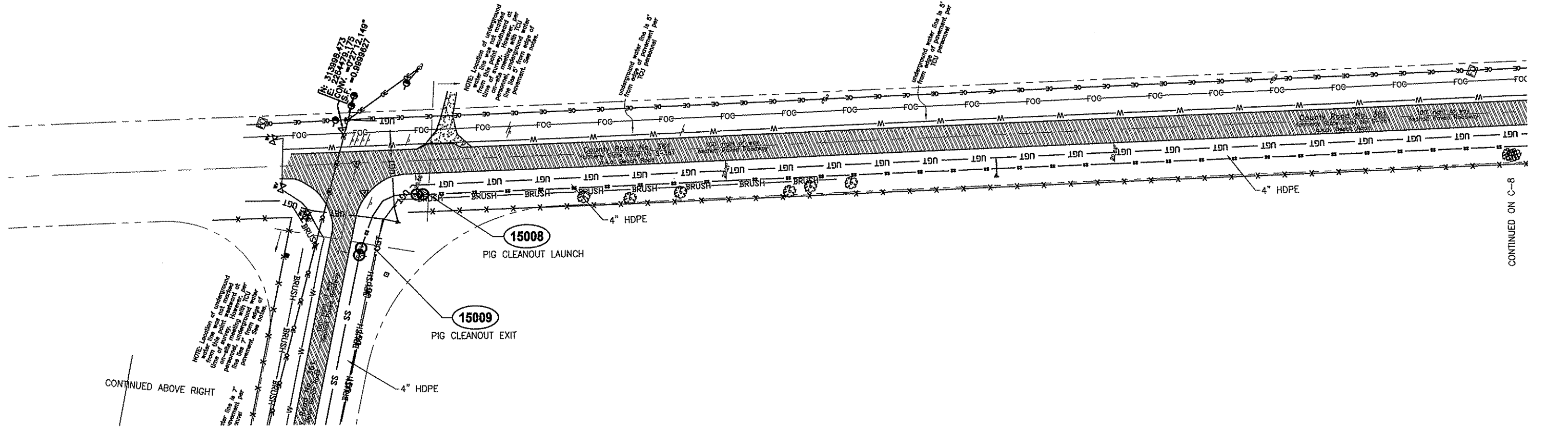
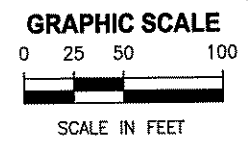
TAYLOR COASTAL CENTRALIZED WASTEWATER SYSTEM - PHASE II
TAYLOR COUNTY, FL

SANITARY SEWER PLAN

CERTIFICATE OF AUTHORIZATION #1841	DATE	PROJECT NO.
APPROVED BY	01/10/11	20450-002-02
JOHN H. HORVATH	SCALE	DWG. NO.
P.E. #47093	AS NOTED	C-6



ALL LINES BURIED 3.0'
UNLESS NOTED OTHERWISE



NOTE: Location of underground water line was not indicated on-site during construction. However, at present, underground water line is 7' from edge of pavement per TCU personnel. See notes.

NOTE: Location of underground water line was not indicated on-site during construction. However, at present, underground water line is 7' from edge of pavement per TCU personnel. See notes.

NOTE: Location of underground water line was not indicated on-site during construction. However, at present, underground water line is 7' from edge of pavement per TCU personnel. See notes.

NOTE: Location of underground water line was not indicated on-site during construction. However, at present, underground water line is 7' from edge of pavement per TCU personnel. See notes.

*a	2/21/10	As Built Delde and Boggy Bay	LDR	LDR
b	01/10/11	As Built Dark Island	LDR	LDR
LTR.	DATE	REVISIONS	BY	APPRO.

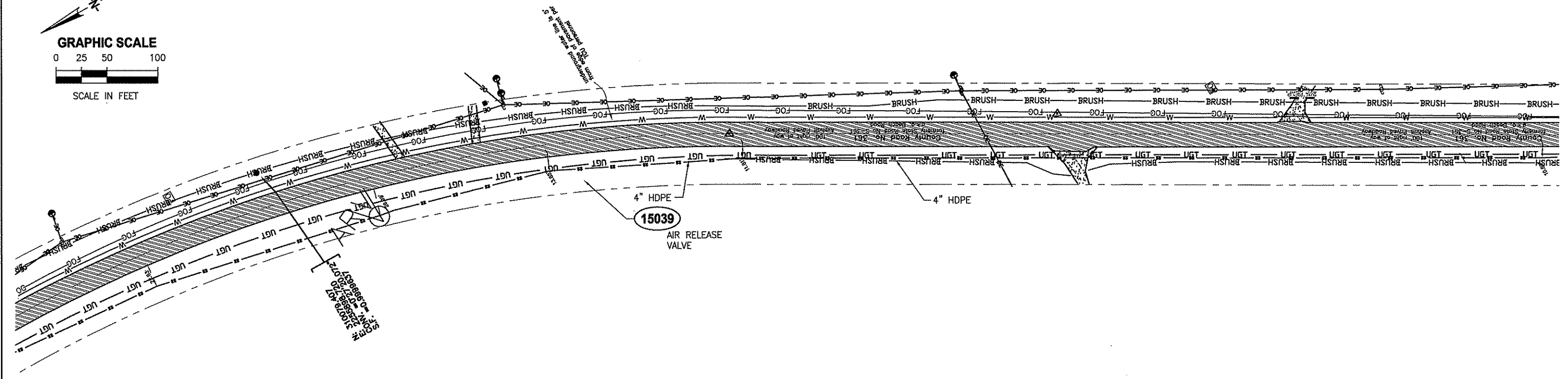
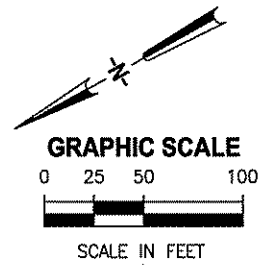
DESIGNED	RBEST
DRAWN	GOLEARY
CHECKED	JHORVATH

JONES EDMUNDS
730 NE WALDO ROAD, GAINESVILLE, FLORIDA 32641 / (352) 377-5821

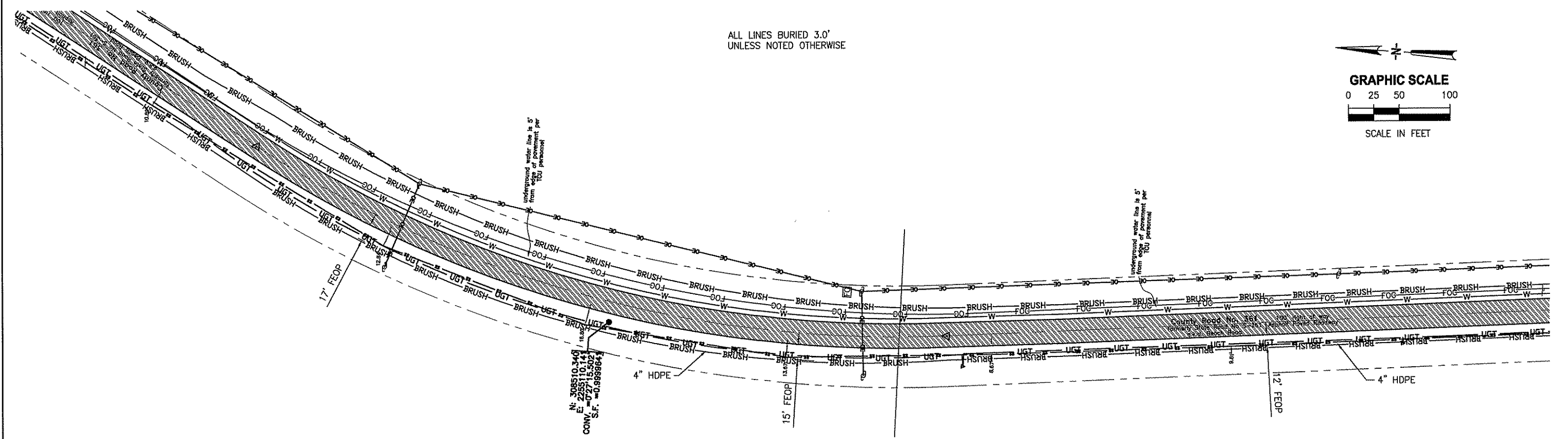
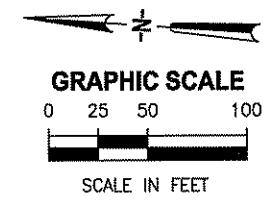
TAYLOR COASTAL CENTRALIZED WASTEWATER SYSTEM - PHASE II TAYLOR COUNTY, FL

SANITARY SEWER PLAN

CERTIFICATE OF AUTHORIZATION #1841	DATE	PROJECT NO.
APPROVED BY	01/10/11	20450-002-02
JOHN H HORVATH P.E. #47093	SCALE	DWG. NO.
	AS NOTED	C-7



ALL LINES BURIED 3.0'
UNLESS NOTED OTHERWISE



LTR.	DATE	REVISIONS	BY	APPRD.
"A"	2/21/10	As Built Deble and Boggy Bay	LDR	LDR
"B"	01/10/11	As Built Dark Island	LDR	LDR

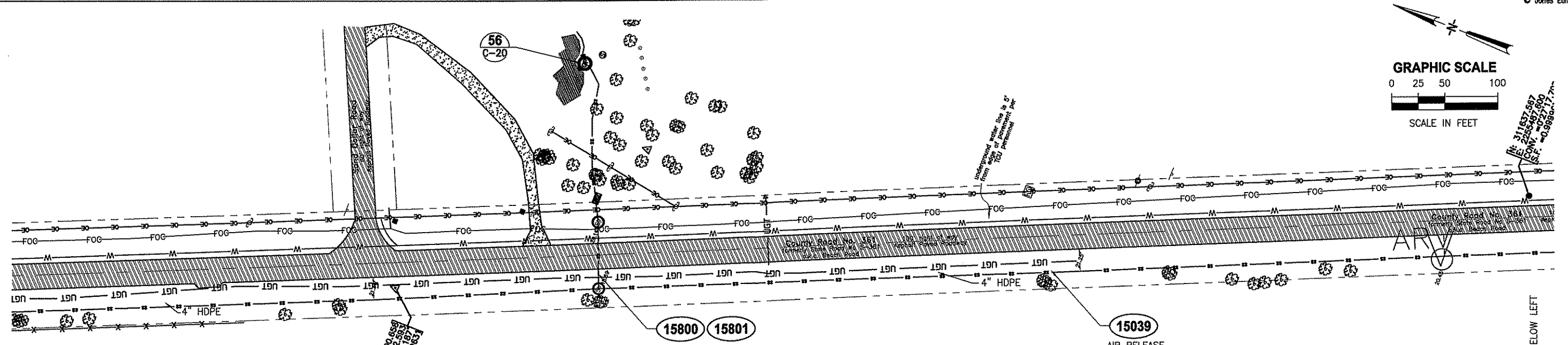
DESIGNED	RBEST
DRAWN	GOLEARY
CHECKED	JHORVATH

JONES EDMUNDS
730 NE WALDO ROAD, GAINESVILLE, FLORIDA 32641 / (352) 377-5821

TAYLOR COASTAL CENTRALIZED WASTEWATER SYSTEM - PHASE II
TAYLOR COUNTY, FL

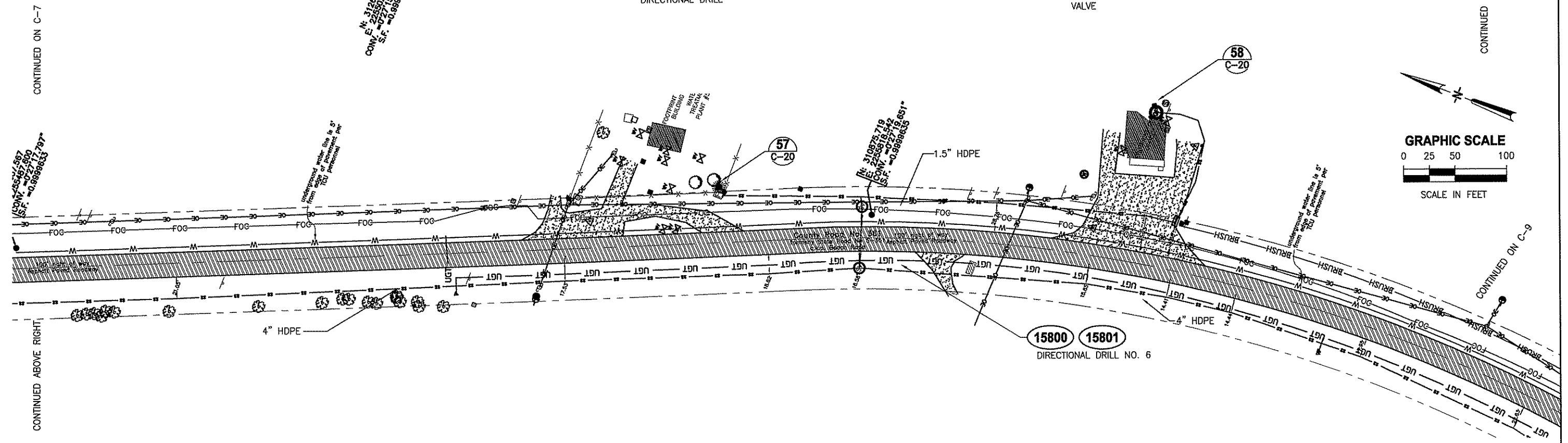
SANITARY SEWER PLAN

CERTIFICATE OF AUTHORIZATION #1841	DATE	PROJECT NO.
APPROVED BY	01/10/11	20450-002-02
JOHN H. HORVATH	SCALE	DWG. NO.
P.E. #47093	AS NOTED	C-9



CONTINUED ON C-7

CONTINUED BELOW LEFT



CONTINUED ABOVE RIGHT

CONTINUED ON C-9

ALL LINES BURIED 3.0'
UNLESS NOTED OTHERWISE

LTR.	DATE	REVISIONS	BY	APPRO.
"A"	2/21/10	As Bull Deke and Boggy Bay	LDR	LDR
"B"	01/10/11	As Bull Dark Island	LDR	LDR

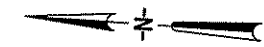
DESIGNED	RBEST
DRAWN	GOLEARY
CHECKED	JHORVATH

JONES EDMUNDS
730 NE WALDO ROAD, GAINESVILLE, FLORIDA 32641 / (352) 577-5821

TAYLOR COASTAL CENTRALIZED WASTEWATER SYSTEM - PHASE II
TAYLOR COUNTY, FL

SANITARY SEWER PLAN

CERTIFICATE OF AUTHORIZATION #1841	DATE	PROJECT NO.
APPROVED BY	01/10/11	20450-002-02
JOHN H. HORVATH P.E. #47093	SCALE	DWG. NO.
	AS NOTED	C-8

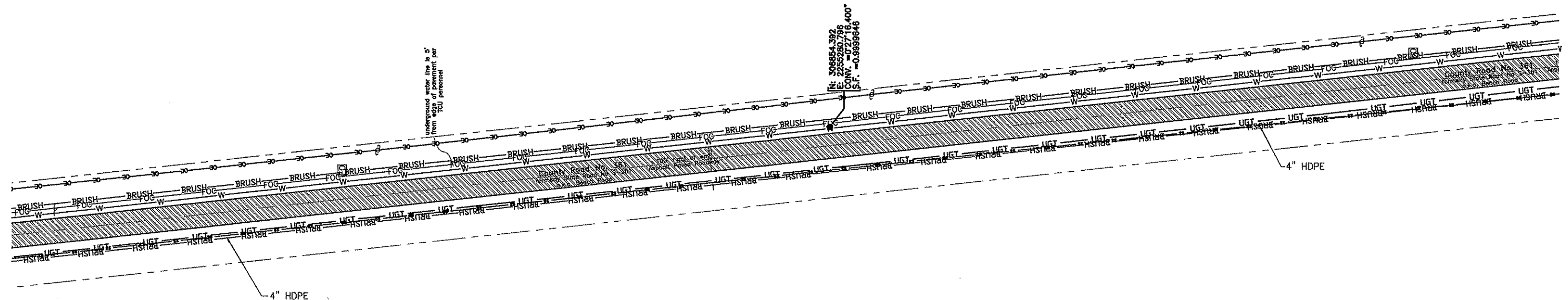


GRAPHIC SCALE

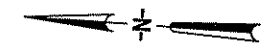
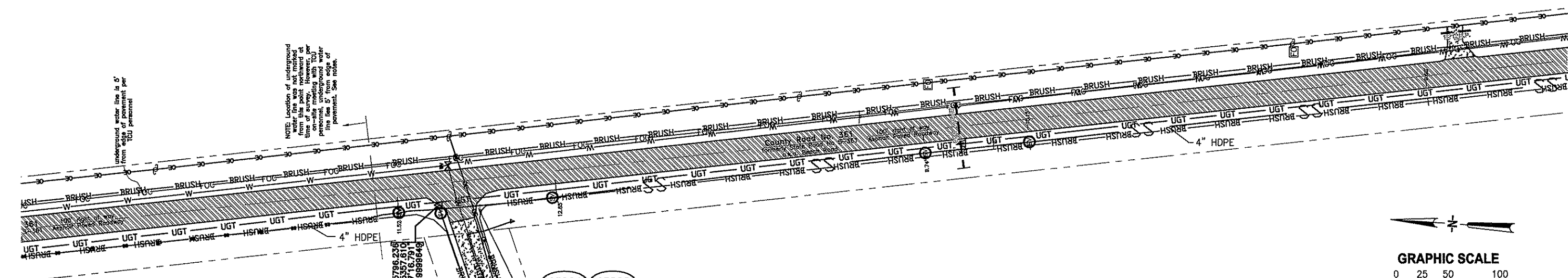
0 25 50 100



SCALE IN FEET



ALL LINES BURIED 3.0'
UNLESS NOTED OTHERWISE

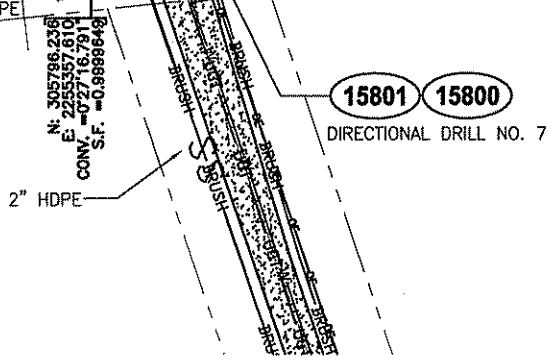


GRAPHIC SCALE

0 25 50 100



SCALE IN FEET



"A"	2/21/10	As Built Deke and Boggy Bay	LDR	LDR
"B"	1/10/11	As Built Dark Island	LDR	LDR
LTR.	DATE	REVISIONS	BY	APPRO.

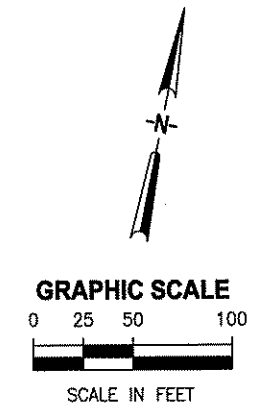
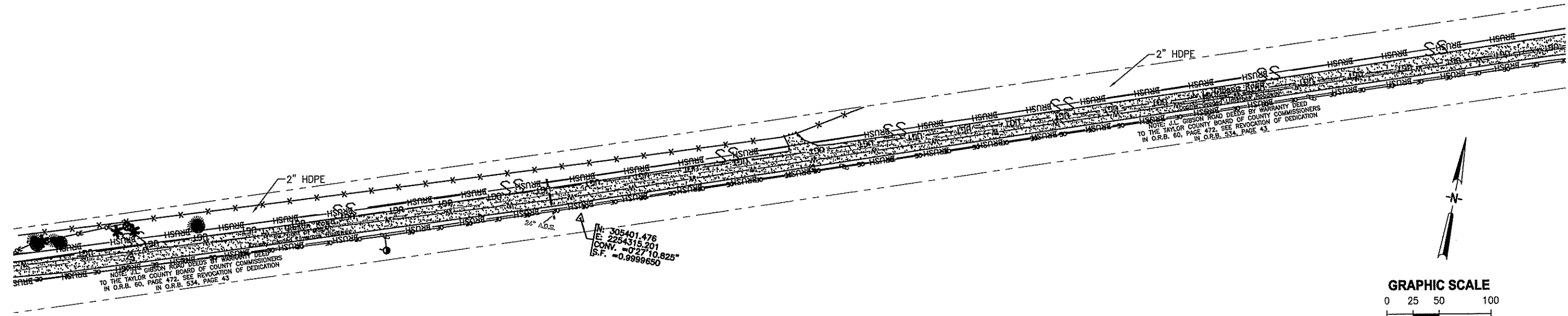
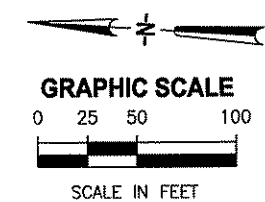
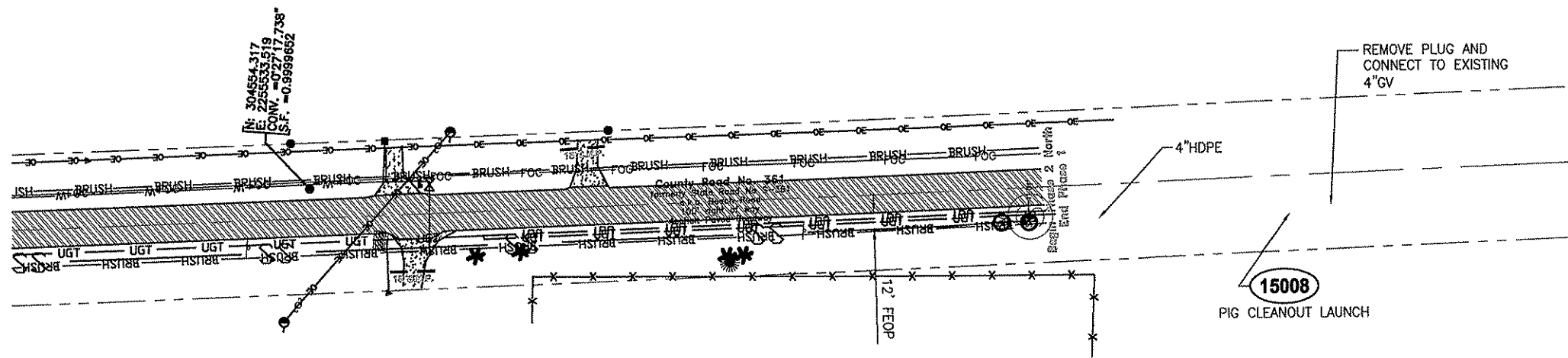
DESIGNED	RBEST
DRAWN	GOLEARY
CHECKED	JHORVATH

JONES EDMUNDS
730 NE WALDO ROAD, GAINESVILLE, FLORIDA 32641 / (352) 377-5821

TAYLOR COASTAL CENTRALIZED WASTEWATER SYSTEM - PHASE II TAYLOR COUNTY, FL

SANITARY SEWER PLAN

CERTIFICATE OF AUTHORIZATION #1841	DATE	PROJECT NO.
APPROVED BY	01/10/11	20450-002-02
JOHN H HORVATH	SCALE	DWG. NO.
P.E. #47093	AS NOTED	C-10



background marked in survey, 7 with

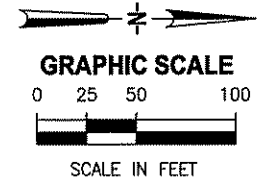
"A"	12/21/10	As Built Delta and Boggy Bay	LDR	LDR	DESIGNED	RBEST
"B"	01/10/11	As Built Dark Island	LDR	LDR	DRAWN	GOLEARY
LTR.	DATE	REVISIONS	BY	APPROD.	CHECKED	JHORVATH

JONES EDMUNDS
730 NE WALDO ROAD, GAINESVILLE, FLORIDA 32641 / (352) 377-5821

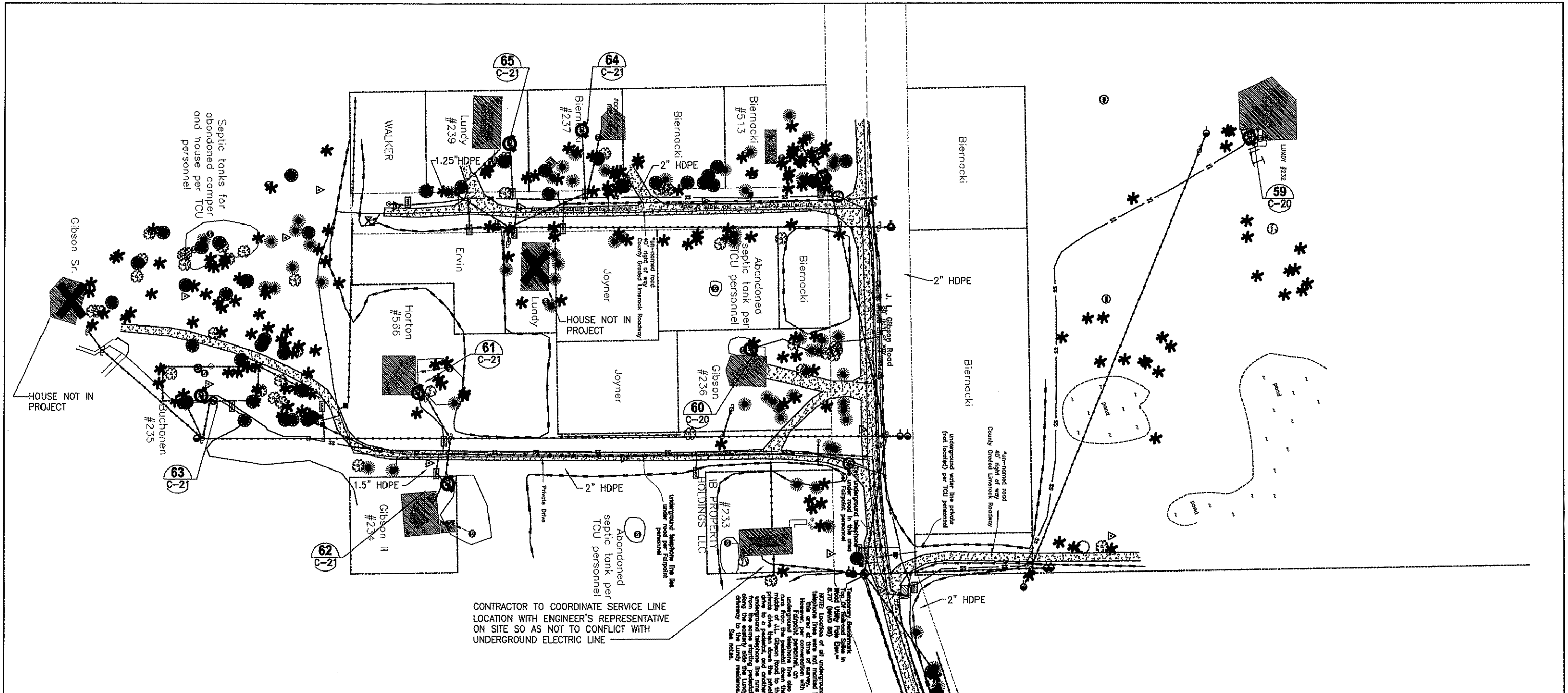
TAYLOR COASTAL CENTRALIZED WASTEWATER SYSTEM - PHASE II TAYLOR COUNTY, FL

SANITARY SEWER PLAN

CERTIFICATE OF AUTHORIZATION #1841	DATE	PROJECT NO.
APPROVED BY	01/10/11	20450-002-02
JOHN H HORVATH	SCALE	DWG. NO.
P.E. #47093	AS NOTED	C-11



ALL LINES BURIED 3.0'
UNLESS NOTED OTHERWISE



CONTRACTOR TO COORDINATE SERVICE LINE LOCATION WITH ENGINEER'S REPRESENTATIVE ON SITE SO AS NOT TO CONFLICT WITH UNDERGROUND ELECTRIC LINE

Temporary development of all underground telephone lines was not marked in this area at time of survey. For that reason, on underground telephone lines shown on this plan, the contractor shall drive to a parallel, and another underground telephone line runs along the eastern side of the Lundy driveway to the Lundy residence. See notes.

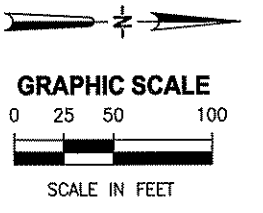
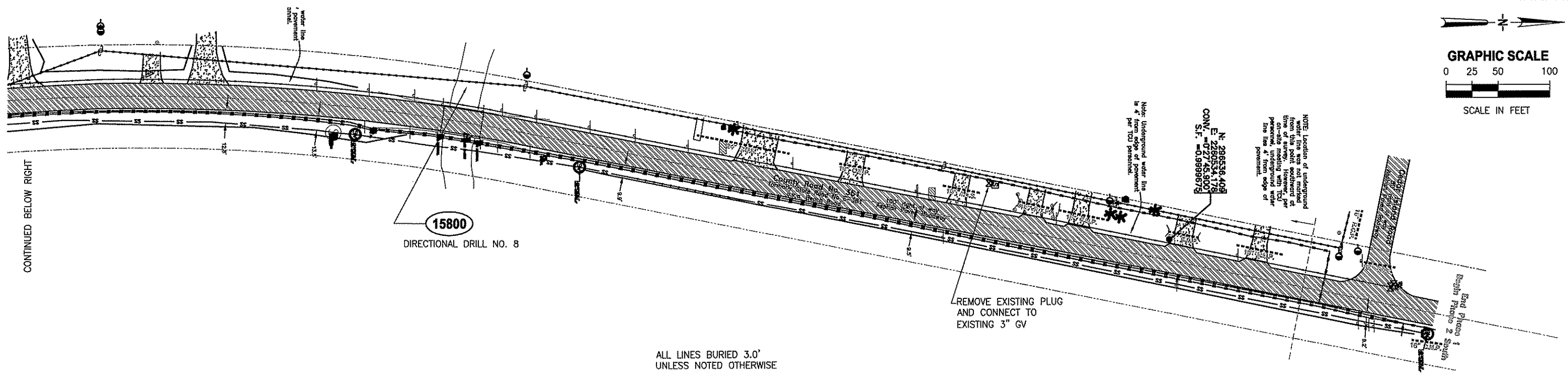
*a	2/21/10	As Built Deke and Boggy Bay	LDR	LDR	DESIGNED	RBEST
b	01/10/11	As Built Dark Island	LDR	LDR	DRAWN	GOLEARY
LTR.	DATE	REVISIONS	BY	APPRD.	CHECKED	JHORVATH



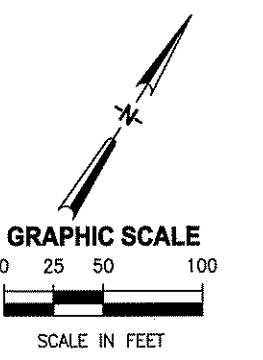
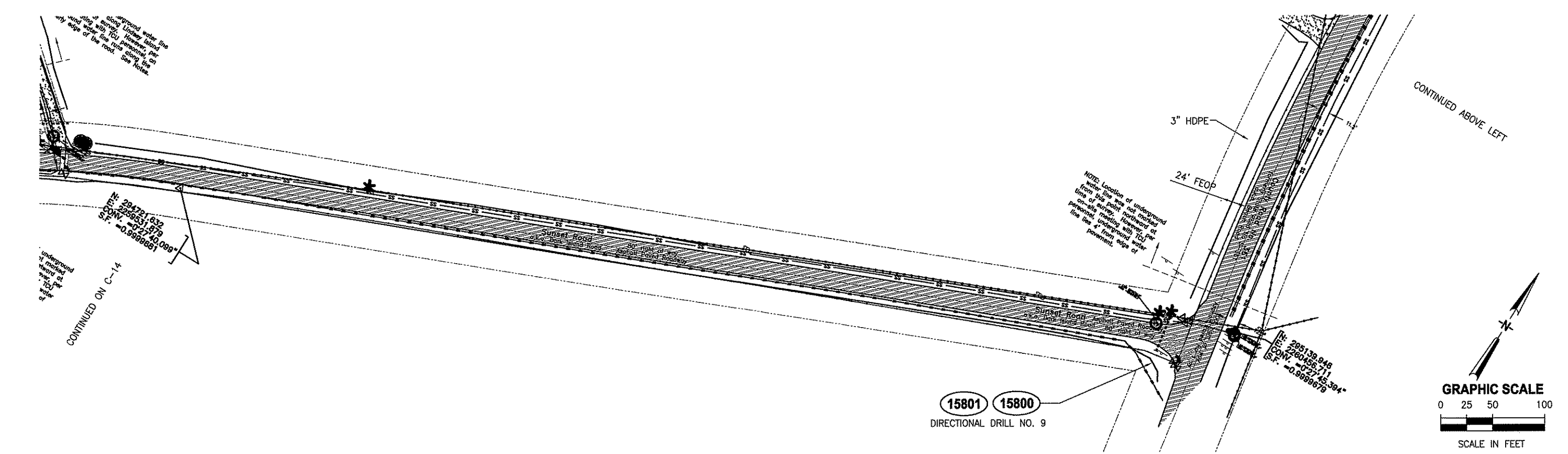
TAYLOR COASTAL CENTRALIZED WASTEWATER SYSTEM - PHASE II
TAYLOR COUNTY, FL

SANITARY SEWER PLAN

CERTIFICATE OF AUTHORIZATION #1841	DATE	PROJECT NO.
APPROVED BY	01/10/11	20450-002-02
JOHN H HORVATH	SCALE	DWG. NO.
P.E. #47093	AS NOTED	C-12



ALL LINES BURIED 3.0'
UNLESS NOTED OTHERWISE



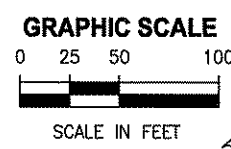
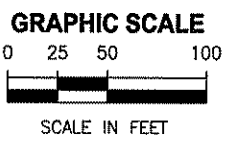
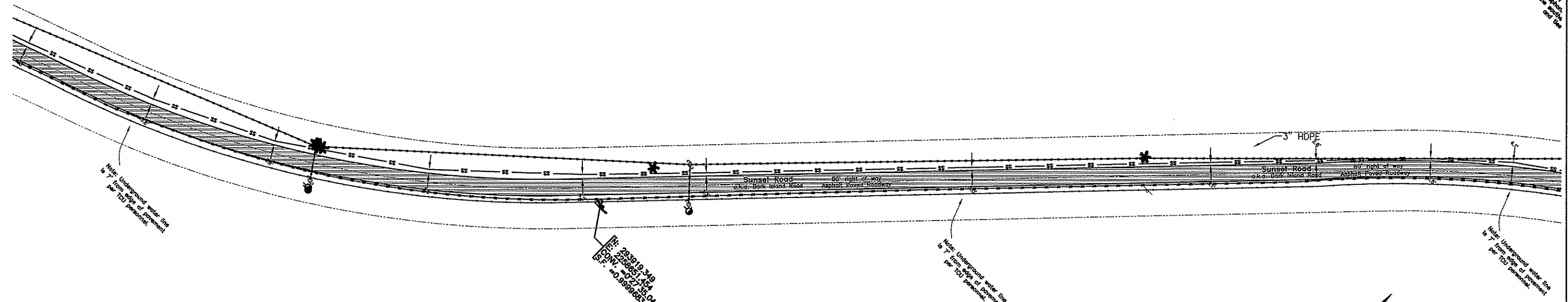
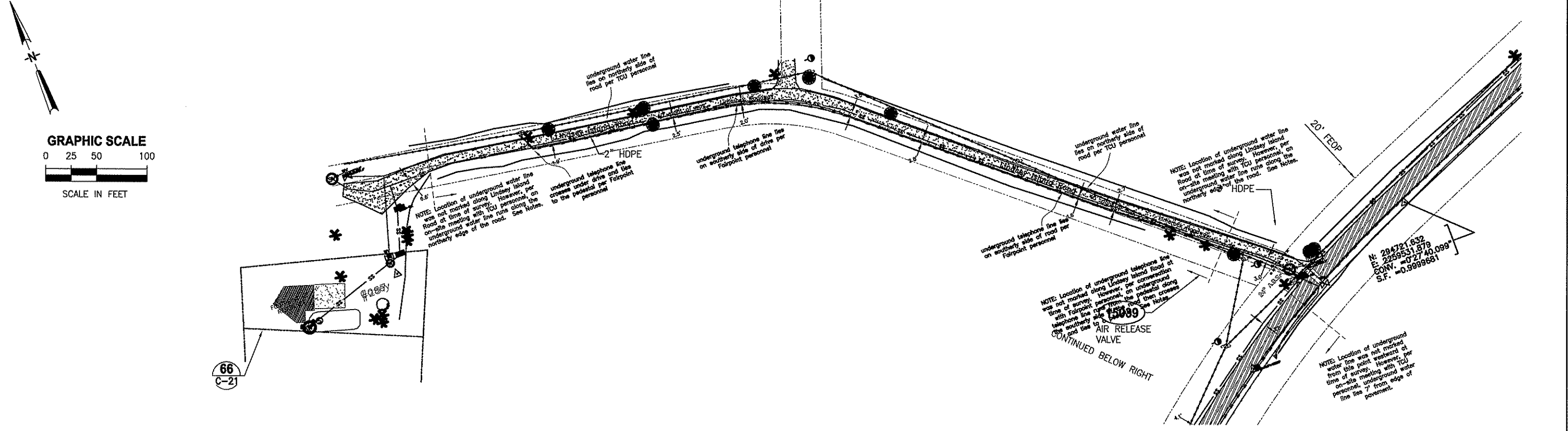
A	2/21/10	As Built Delta and Bogy Bay	LDR	LDR	DESIGNED	RBEST
B	3/10/11	As Built Dark Island	LDR	LDR	DRAWN	GOLEARY
					CHECKED	JHORVATH
LTR.	DATE	REVISIONS	BY	APPRD.		



**TAYLOR COASTAL CENTRALIZED
WASTEWATER SYSTEM - PHASE II
TAYLOR COUNTY, FL**

SANITARY SEWER PLAN

CERTIFICATE OF AUTHORIZATION #1841	DATE	PROJECT NO.
APPROVED BY	01/10/11	20450-002-02
JOHN H HORVATH	SCALE	DWG. NO.
P.E. #47093	AS NOTED	C-13



66
C-21

N: 284721.832
E: 2259531.879
CONV. = 0°27'40.089"
S.F. = 0.9999681

N: 2259531.879
E: 2259531.879
CONV. = 0°27'45.041"
S.F. = 0.9999683

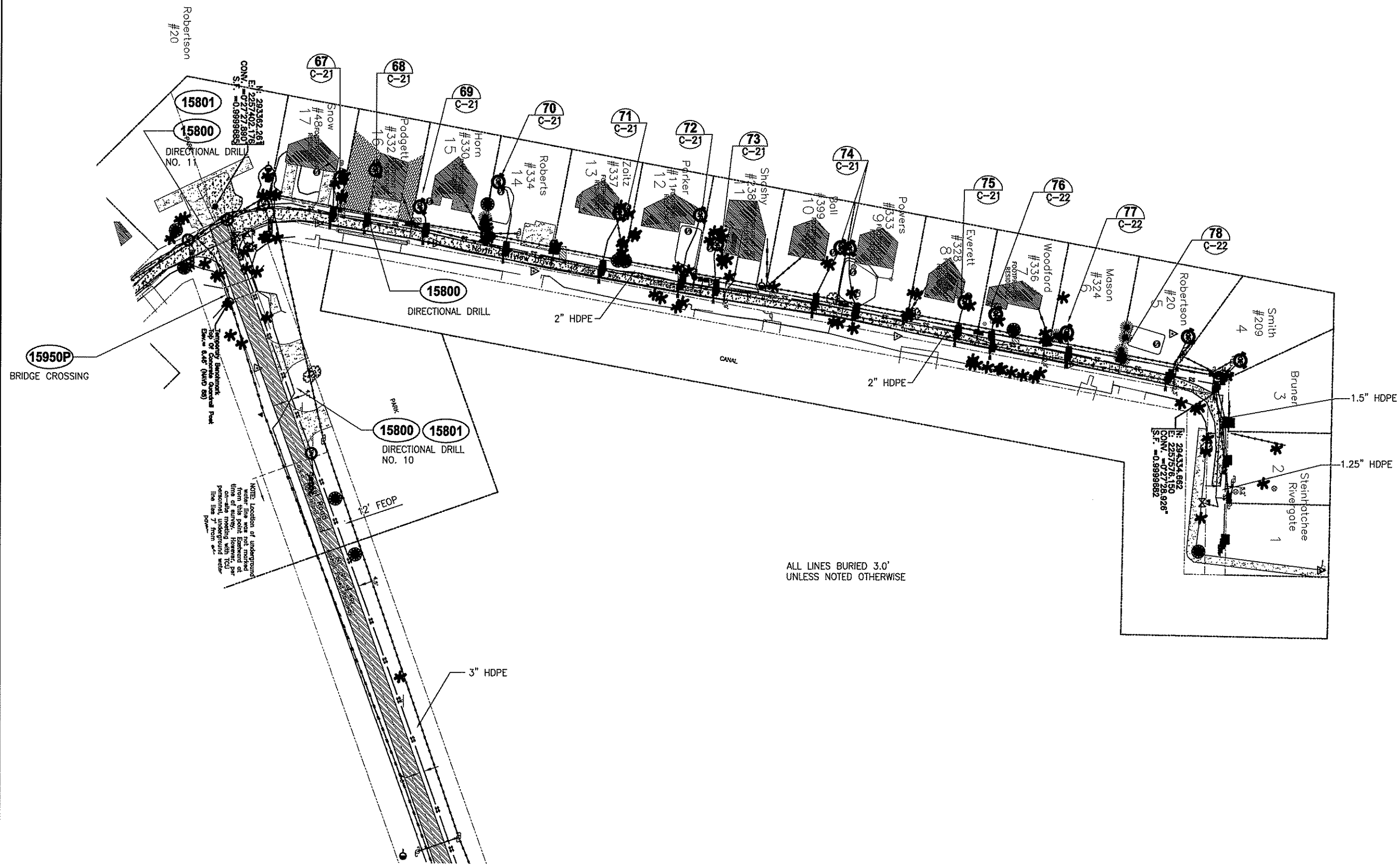
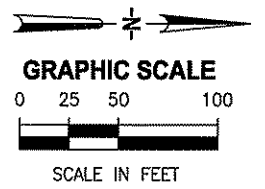
"A"	2/21/11	As Built Deke and Boggy Bay	LDR	LDR	DESIGNED	RBEST
"B"	01/10/11	As Built Dark Island	LDR	LDR	DRAWN	GOLERY
					CHECKED	JHORVATH
LTR.	DATE	REVISIONS	BY	APPRO.		

JONES EDMUNDS
730 NE WALDO ROAD, GAINESVILLE, FLORIDA 32641 / (352) 377-5821

**TAYLOR COASTAL CENTRALIZED
WASTEWATER SYSTEM - PHASE II
TAYLOR COUNTY, FL**

SANITARY SEWER PLAN

CERTIFICATE OF AUTHORIZATION #1841	DATE	PROJECT NO.
APPROVED BY	01/10/11	20450-002-02
JOHN H. HORVATH P.E. #47093	SCALE	DWG. NO.
	AS NOTED	C-14



NOTE: Location of underground water line was not marked during site investigation. However, per on-site meeting with TCU personnel, underground water line lies below from 8\"/>

ALL LINES BURIED 3.0'
UNLESS NOTED OTHERWISE

"X"	2/21/10	As Built Delte and Boggy Bay	LDR	LDR
"B"	11/10/11	As Built Dark Island	LDR	LDR
LTR.	DATE	REVISIONS	BY	APPRD.

DESIGNED	RBEST
DRAWN	GOLEARY
CHECKED	JHORVATH

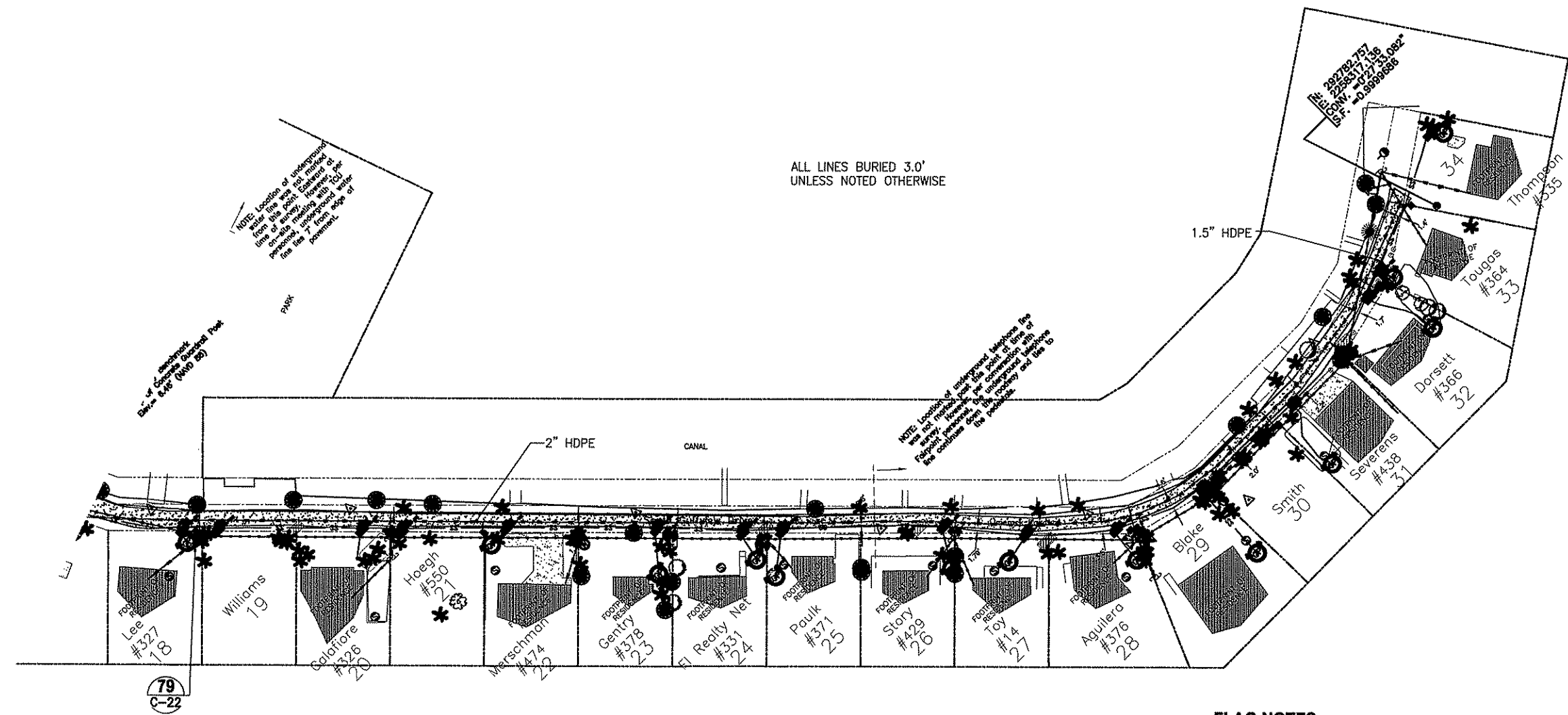
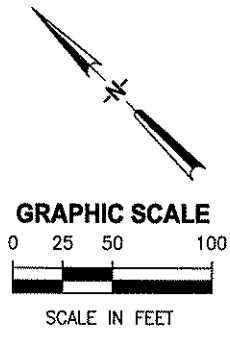


TAYLOR COASTAL CENTRALIZED WASTEWATER SYSTEM - PHASE II
TAYLOR COUNTY, FL

SANITARY SEWER PLAN

CERTIFICATE OF AUTHORIZATION #1841
APPROVED BY
JOHN H HORVATH
P.E. #47093

DATE	01/10/11	PROJECT NO.	20450-002-02
SCALE	AS NOTED	DWG. NO.	C-15



FLAG NOTES:

- 1. LOCATE GRINDER PUMP AS CLOSE TO PROPERTY LINE/TREES AS POSSIBLE
- 2. LOCATE GRINDER PUMP AS CLOSE TO STAIRS AS POSSIBLE
- 3. LOCATE GRINDER PUMP AS CLOSE TO HOUSE NEXT TO THE DOWNSPOUT AS POSSIBLE

"a"	2/21/10	As Built Dike and Boggy Bay	LDR	LDR	DESIGNED	RBEST
"b"	5/10/11	As Built Dark Island	LDR	LDR	DRAWN	GOLEARY
LTR.	DATE	REVISIONS	BY	APPROD.	CHECKED	JHORVATH



TAYLOR COASTAL CENTRALIZED WASTEWATER SYSTEM - PHASE II
TAYLOR COUNTY, FL

SANITARY SEWER PLAN

CERTIFICATE OF AUTHORIZATION #1841 APPROVED BY	DATE	PROJECT NO.
JOHN H HORVATH P.E. #47093	01/10/11	20450-002-02
	SCALE	DWG. NO.
	AS NOTED	C-16